



# 10 Year Plan

Meeting the demand for mainstream school places in Essex

2025-2034

January 2025

# Contents

<b>1. Executive Summary</b>	2
1.1 Areas of growth and additional places planned	2
1.2 Purpose and scope	3
1.3 School Organisation, Funding & Delivery	3
1.4 Net-Zero Schools	4
<b>2. Introduction – Planning for school places</b>	5
2.1 Statutory duty and available funding	5
2.2 Forecasting methodology	5
2.3 Sustainable Schools Strategy	6
2.4 Academies and Free Schools	6
2.5 Factors that influence planning for school places	7
2.6 New Housing, S106 and Community Infrastructure Levy	7
<b>3. Forecasts and Plans</b>	10
<b>3.1 Mid Essex</b>	11
3.1.1 Braintree	12
3.1.2 Chelmsford	18
3.1.3 Maldon	24
<b>3.2 North East Essex</b>	28
3.2.1 Colchester	29
3.2.2 Tendring	35
<b>3.3 South Essex</b>	41
3.3.1 Basildon	42
3.3.2 Brentwood	47
3.3.3 Castle Point	50
3.3.4 Rochford	52
<b>3.4 West Essex</b>	55
3.4.1 Epping Forest	56
3.4.2 Harlow	60
3.4.3 Uttlesford	63
<b>4. Past Expansions and New Schools in Essex</b>	69

# 1. Executive Summary

## 1.1 Areas of growth and additional places planned

In Essex (Essex County Council or ECC) as of May 2024 there were 445 primary, infant and junior schools; 78 secondary schools; 2 all-through schools and 1 University Technical College. The total capacity in May 2024 was 130,398 primary places and 105,398 secondary places (including sixth forms). In May 2024 there were 120,193 primary pupils and 95,255 secondary pupils (including sixth form) on roll at ECC schools. This was an increase of 158 primary and 1,064 secondary pupils since May 2023.

The increase in demand for primary school places in Essex is predicted to continue. The forecasts used in this Plan suggest that the total number on roll by 2034/35 will be 120,774 primary pupils. The demand for secondary school places (including sixth form) is expected to peak at 99,898 during the 2028/29 academic year.

The need for new places will be different from what the Essex-wide figures above suggest as the available capacity does not always align to areas of growth or the required year groups. As well as this, the National Audit Office report 'Capital Funding for New School Places' (2013) refers to a minimum 5% surplus that the Department for Education (DfE) assumes in its planning as necessary to support operational flexibility.

For school management reasons the number of pupils that can be admitted each September varies, and overall capacity cannot simply be divided by the number of year groups to calculate the number of pupils that can be admitted each year. When planning school places it is prudent to focus on the Published Admission Number of schools in each area and the number of pupils in each corresponding admission year.

Based on the number of projects anticipated ECC will need to deliver an additional 4,340 primary school places and 1,740 secondary school places over the course of the 10 Year Plan. This does not include some of the new schools that will be required and are being planned to support new garden communities when they are built. As plans for these new communities progress future iterations of this plan will include forecast demand for school places arising from them, and more new schools to meet that demand.

## 1.2 Purpose and scope

The purpose of the 10 Year Plan is to set out:

- The demand for mainstream school places in the next 10 years (from academic year 2025/26 to academic year 2034/35) for each of the pupil place planning areas
- Solutions already in the pipeline that will meet the forecast demand for school places
- Potential options to address medium to long term forecast demand for school places
- The context in which the School Organisation & Place Planning Service operates to ensure there are sufficient school places

The Plan is updated annually to consider new forecasts, the capital budget setting cycle, and potential options and solutions that have been identified since the previous version. This 10 Year Plan is based on forecasts produced during the 2023/24 academic year as part of the DfE's annual School Capacity data (SCAP) return.

The scope of the 10 Year Plan is mainstream statutory age education provision in Essex. Special Educational Needs and Disability (SEND), early years, sixth form and other forms of education provision are not within the scope of this plan but are considered when deciding solutions to ensure efficient and sustainable choices are made for capital investment.

## 1.3 School Organisation, Funding & Delivery

### School Organisation

For the purposes of planning school places ECC organises schools by quadrants, districts and planning groups. The quadrants and their districts are listed in the following table:

<b>Mid</b> Braintree, Chelmsford, Maldon	<b>North East</b> Colchester, Tendring
<b>South</b> Basildon, Brentwood, Castle Point, Rochford	<b>West</b> Epping Forest, Harlow, Uttlesford

Planning groups are groups of schools, defined by geography and admission patterns, wherein a sufficiency of places across the group will generally ensure every child can access a local school place even if some schools are oversubscribed. Planning groups provide the basis for the annual SCAP return, which determines the level of 'Basic Need' funding ECC is allocated. Some of the groups have changed since the 2024-2033 Ten Year Plan. Some groups are not strictly by geographical district and their schools may be found under a nearby district. The planning group forecasts are set out in detail in Section 3 of this document.

The Essex School Organisation Service comprises a team of 10 officers who lead and manage the school organisation and pupil place planning activity of the local authority. Officers from the team

have assigned quadrants and liaise with schools individually and collectively to discuss current numbers on roll, future demand for places and any projects that need to be completed to ensure sufficient capacity. Officers from the team also engage with planning authorities, local members, residents, communities, faith groups, developers and all tiers of government. In this way they develop the 10 Year Plan collaboratively with schools and other stakeholders.

## **Funding & Delivery**

ECC uses a mixture of funding sources to finance additional school places. Funding sources available include Basic Need grant from central government, Section 106 / Community Infrastructure Levy contributions from developers, Free School funding from the Education and Skills Funding Agency (ESFA) and contributions from schools. New school places must be funded through these means as ECC has no other grants or funds dedicated to providing school places.

The Capital Programme, which includes the planned spending on education infrastructure, is published annually at [www.essex.gov.uk](http://www.essex.gov.uk). ECC has a professional in-house Infrastructure Delivery Team. The team assists the development of school expansions and new schools by undertaking viability studies and then leading on the delivery of the capital projects to completion. Through the work of this team school building projects are delivered to a high standard and at good value, ensuring the best outcome from the investment of public funds.

## **1.4 Net-Zero Schools**

Since the start of 2020 ECC has commissioned all school expansion projects to include renewable energy as a contribution towards combatting climate change. 2021 saw completion of Essex's first new school buildings designed for net-zero carbon in operation. This work complements a programme of energy-efficiency upgrades and other works being planned for existing school buildings to further reduce Essex's carbon footprint. Since 2023 all new school buildings for basic need expansions, including new schools, have been designed to be net-zero carbon in operation.

## 2. Introduction – Planning for school places

### 2.1 Statutory duty and available funding

ECC has a statutory duty to ensure sufficient school places for children aged between 4 and 16 years old. Fulfilling this duty, and aligning strategic planning for school places with other service requirements, supports the strategic aims of Everyone's Essex 2021-2025, ECC's plan for levelling up the county:

- Strong, inclusive, sustainable economy
- High quality environment
- Health, wellbeing and independence for all ages
- A good place for children and families to grow

To discharge this responsibility school organisation changes are commissioned in response to forecast data that predicts the demand for school places. These school organisation changes include building new schools, expanding existing schools, closing schools, or reducing the intake at schools.

As stated in section 1.3, there are a number of funding sources for delivering school building projects, all of which need to be coordinated through the Council's Capital Programme. A long-term plan for ensuring sufficient school places is required to enable capital (and revenue) financing to be secured and spent effectively.

Endorsement for the Plan is sought from the ECC's investment boards upon each revision to enable a dynamic response to changes in demand for school places, thereby ensuring that every child in Essex has an appropriate place to go to school.

### 2.2 Forecasting methodology

School forecasts are prepared for each area using the number on roll in the January Census, the number of places offered for September, historical trends in admissions, and GP registrations in October the previous year (the number of children registered with a GP's surgery based on NHS data). For year groups beyond reliable GP registration data an average of the last three potential cohort sizes is calculated and Office for National Statistics birth rate trends are applied to estimate long term need. For schools with sixth forms historical staying on rates are calculated and applied to the relevant cohorts.

The number of additional pupils likely to be generated by new housing is added to the forecasts. These figures are based on housing trajectories supplied by planning authorities (the district councils), amended with subsequent planning approvals and information from housing developers and planning authorities. External factors such as interest rates could affect housing delivery and therefore pupil demand.

The likely demand for additional places at local schools created by new housing is calculated using different factors for houses and flats. One-bedroom units and certain other types of dwellings, such as student accommodation and housing for the elderly, that are unlikely to house children are discounted from the calculation. The factors used for primary pupils are 0.3 additional school pupils per new house and 0.15 additional pupils per new flat. For secondary pupils the factors are 0.2 additional pupils per new house and 0.1 additional pupils per new flat. The gradual build-up of pupils from new housing is modelled using additional factors to stagger the pupil product, rather than the full pupil product being added in immediately after new homes are occupied.

## **2.3 Sustainable Schools Strategy**

The aim of the Sustainable Schools Strategy is to encourage schools which are strong and viable both educationally and financially, and which provide our children with a high-quality education.

The Sustainable Schools Strategy group explores the issues facing schools, including forecast pupil numbers, budget pressures, recruitment and retention, school standards, importance to communities, and potential income opportunities. Key indicators are used to provide a framework to consider issues of school sustainability. The intention is to aid all those involved with schools, helping to assess where early intervention is required.

The group also makes recommendations to the Director of Education to ensure that, where possible, schools can take proactive decisions to secure a sustainable future and provide a high-quality education.

## **2.4 Academies and Free Schools**

There are more than 325 academies in Essex. ECC has a robust procedure in place to support the academy conversion process, which is primarily a legal function.

Free Schools were initially a method for groups of parents or other parties to set up a school that would provide diversity in the school system, often in response to low standards in the local area. Over recent years the Free Schools programme has changed. Not only are all new schools proposed by local authorities considered Free Schools (this has no practical impact on opening new schools), but Free Schools are now being proposed by multi-academy trusts and other groups, in response to forecast demand.

The Free Schools Programme provides an opportunity for ECC to build on a strong collaborative working relationship with the Regional Director and multi-academy trusts in Essex. This will enable ECC to continue to ensure sufficient school places even if / when no schools are under its direct control.

## 2.5 Factors that influence planning for school places

There are a number of factors that influence strategic thinking and solutions outlined in this 10 Year Plan. These are kept under regular review and include:

- Fluctuation in forecast pupil numbers
- Planning authority Local Development Plans (many of which are still 'emerging')
- Phasing and timing of housing developments and the availability of sites for new school provision (services, access, infrastructure)
- Changing patterns of growth in mid-year migration
- Schools and Academies adjusting their Published Admission Numbers or capacities
- Cross-border migration patterns and delivery solutions
- Changes to admissions arrangements
- Project viability
- Home to school transport

The Home to School Transport Budget comprises a grant (which is not 'ring-fenced') and a contribution from the Dedicated Schools Grant. This budget is under constant pressure. When considering the strategic need for additional school places in an area, the transport implications are key to determining the locations of solutions, and thereby the cost / benefit of those solutions. Where solutions do not address need locally, and transport must be provided, ECC is obliged to meet the cost of the transport in perpetuity.

## 2.6 New Housing, Section 106, and Community Infrastructure Levy

The 12 borough / district / city councils in Essex that act as local planning authorities are required to draw up Local Plans. Under the terms of the National Planning Policy Framework (NPPF) these Local Plans must, as a minimum, seek to accommodate their local housing need as assessed using the 'Standard Method'. In addition to the local housing need figure, any needs that cannot be met within neighbouring areas should also be taken into account in establishing the amount of housing to be planned for. These Plans are required to identify specific deliverable sites in the first five years of the Plan period. In addition, they are required to identify other developable sites for new housing for years 6-10 of the Plan period, to ensure an ongoing five-year supply of housing sites. ECC comments on the likely impact on school places of new housing allocations to help local planning authorities understand how sustainable their plans are for school place planning and, importantly, where they need to allocate land for new school place provision.

To meet the need for new housing a number of Local Planning Authorities have allocated and / or granted permission for new Garden Communities:

- Chelmsford Garden Community (around 10,000 homes)
- Harlow and Gilston Garden Town (around 16,500 homes, of which 10,000 are in East Herts)
- Tendring Colchester Borders Garden Community (around 7,500 homes)



- Dunton Hills Garden Village (around 3,700 homes)

These will be significant new settlements that aim to be self-sustaining in terms of infrastructure. The precise scale of plans and timescales are still emerging so in some cases our forecasts have yet to include this growth. New schools will need to be planned and future versions of this document will consider the needs of these Garden Communities. Our general approach is outlined in the document 'Garden Communities and Planning School Places' which can be downloaded from our web site ([www.essex.gov.uk](http://www.essex.gov.uk)).

A number of the local planning authorities do not have an up to date adopted Local Plan. This has resulted in housing developers submitting speculative planning applications for sites that may not be sustainable from a school place planning perspective. In the absence of a five-year land supply the applicant has a strong chance of a successful appeal if the planning application is refused. This can result in housing developments being granted planning permission in areas where there are insufficient places or expansion options at local schools to accommodate extra children, and the development is of insufficient scale to deliver a new school. This can be particularly problematic in single school rural areas.

Because these housing developments are not known in advance they may afford insufficient time to identify, plan and build places to meet the increased need. This may mean school transport has to be funded. ECC seeks to limit this impact through proactive collaboration with the local planning authorities to aid them in development of their local plans. The way the team seeks to engage in this is set out in our 'Local and Neighbourhood Planners' Guide to School Organisation' which can also be downloaded from our web site ([www.essex.gov.uk](http://www.essex.gov.uk)).

When the number of pupils generated by new housing is greater than the surplus capacity in permanent accommodation at appropriate local schools, a contribution can be sought from the developer via a Section 106 (s106) agreement. This contribution can be in the form of additional land and / or a financial contribution for new accommodation. Local planning authorities decide whether to support such requests and they have a duty to balance all the requests made by infrastructure providers against the viability of the development. Full details of how developer contributions are sought and calculated can be found in ECC's Developers' Guide to Infrastructure Contributions at [www.essex.gov.uk](http://www.essex.gov.uk).

The Community Infrastructure Levy (CIL) allows a local planning authority to introduce a fixed charge on development to fund infrastructure that is not being delivered through s106. Of the 12 district councils in Essex, Brentwood Borough Council, Castle Point Borough Council and Chelmsford City Council have adopted a CIL. Other councils are considering CIL, but it is not thought that all 12 will adopt a charge.

Phasing and timelines for potential new housing are closely monitored. Plans are being progressed with developers to ensure that new provision can be delivered, at the earliest viable opportunity, where there is insufficient capacity within existing schools to accommodate pupils from the initial

phases. Delivery of new provision is dependent on confirmation of the housing build rate by the developer, planning permissions, and the timescale for completion of necessary infrastructure to serve the new school, including services and access. The quality of the environment around the school site is essential, as a new school cannot open in the middle of a building site with no safe direct walking and cycling routes.

### 3. Forecasts and plans

The following sections include the school place forecasts at a planning group level, grouped into districts and quadrants. For each district, the primary planning groups are shown first, followed by secondary planning groups. Below is an example:

1 **A. North (Suffolk border)**

2 Current PAN: 111  
Current Capacity: 778

Reception Place Forecast

Year	25/26	26/27	27/28	28/29	29/30	30/31	31/32	32/33	33/34	34/35
+/-	28	28	32	29	28	28	29	29	29	29

3

4 Belchamp St Paul's CE Primary, Ridgewell CE Primary, St Andrew's CE Primary Bulmer, St Andrew's CE Primary Gt Yeldham, St Margaret's CE Primary Toppesfield, Steeple Bumpstead Primary

5

Year	NOR
25/26	573
26/27	589
27/28	581
28/29	579
29/30	586

Project Pipeline

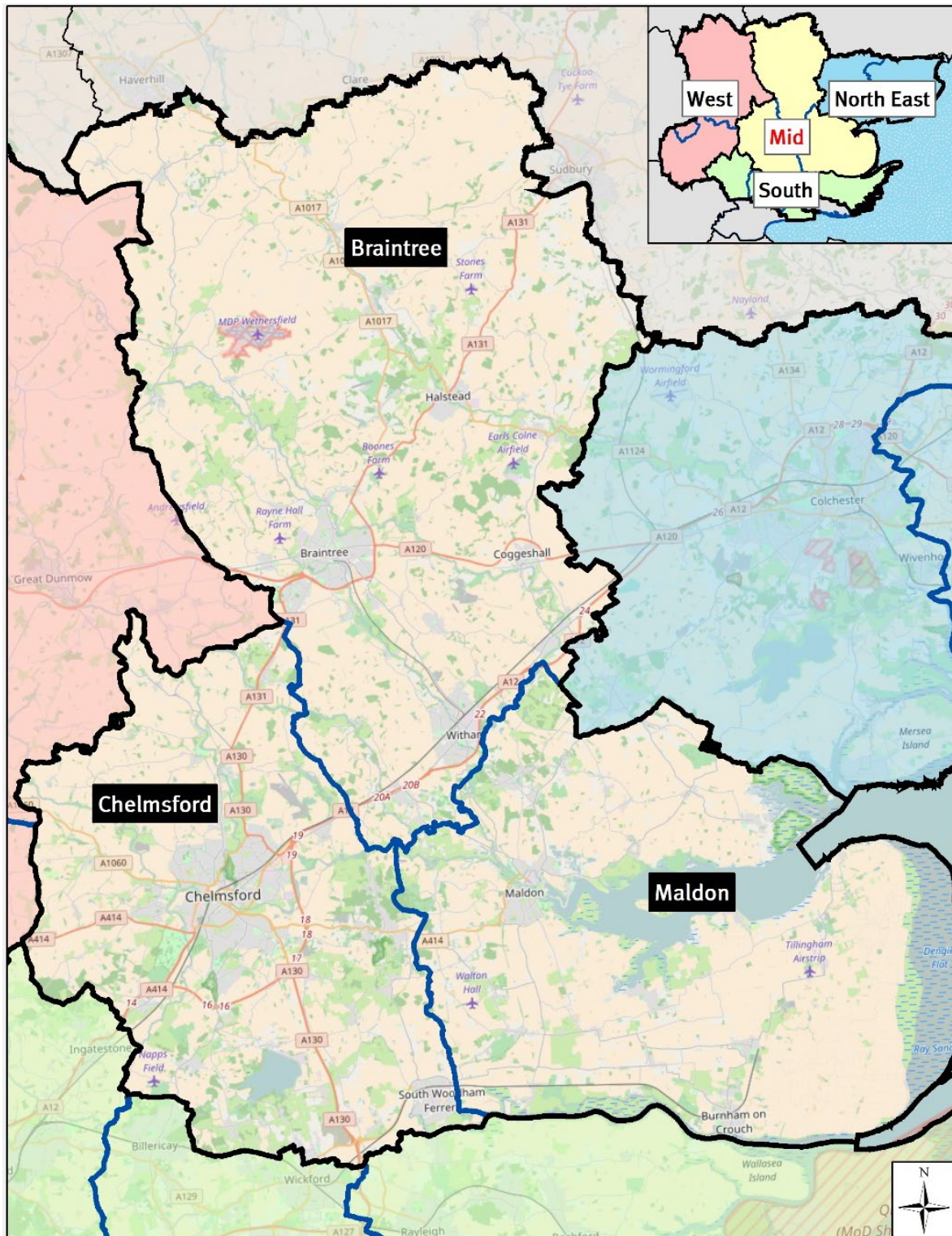
School	Year	Description	Places
No expansion projects currently in pipeline			

6

7

- Name** – Each planning group has a name, describing a general geographical area.
- Current PAN** - The Published Admission Number for September 2024 i.e. the number of places available at Reception or Year 7 (the first year of secondary education).  
**Current Capacity** is the total physical capacity of the schools as of May 2024.
- Forecast** – This headline forecast will be for either Reception places (primary) or Year 7 places (secondary). It shows the surplus or deficit of places forecast for the next 10 years, against PAN.
- Schools** – A list of the schools included in the planning group.
- Number on Roll (NOR)** – This data shows the entire forecast school population. This can indicate where additional school places are required in response to high levels of new housing or inward migration, even when the headline forecast does not indicate a need.
- Projects Pipeline** – These are the projects the council is proposing, to mitigate any forecast need for additional school places. A school will be named where the project is agreed in principle, but subject to governance along with the year of implementation and a brief description of the project.
- Places** – In the example (15/105), 15 refers to the number of Reception places created (expected increase in PAN), and 105 refers to the total capacity created across the seven primary year groups.

## 3.1 Mid Essex



For the purposes of school organisation and place planning Mid Essex is Braintree and Maldon districts and Chelmsford City. All three councils have adopted Local Development Plans albeit they have all commenced work on their next Plans.

### 3.1.1 Braintree

#### Primary School Planning Groups

##### A. North (Suffolk border)

Current PAN: 111

Current Capacity: 778

##### Reception Place Forecast

Year	25/26	26/27	27/28	28/29	29/30	30/31	31/32	32/33	33/34	34/35
+/-	28	28	32	29	28	28	29	29	29	29

Belchamp St Paul's CE Primary, Ridgewell CE Primary, St Andrew's CE Primary Bulmer, St Andrew's CE Primary Gt Yeldham, St Margaret's CE Primary Toppesfield, Steeple Bumpstead Primary

##### Number on Roll (NOR)

Year	NOR
25/26	573
26/27	589
27/28	581
28/29	579
29/30	586

##### Project Pipeline

School	Year	Description	Places
No expansion projects currently in pipeline			

##### B. West (Bardfield)

Current PAN: 59

Current Capacity: 433

##### Reception Place Forecast

Year	25/26	26/27	27/28	28/29	29/30	30/31	31/32	32/33	33/34	34/35
+/-	26	24	22	23	23	23	23	23	23	23

Finchingfield St John the Baptist CE Primary, Gt Bardfield Primary, Shalford Primary, Wethersfield CE Primary

##### Number on Roll (NOR)

Year	NOR
25/26	288
26/27	286
27/28	280
28/29	279
29/30	268

##### Project Pipeline

School	Year	Description	Places
No expansion projects currently in pipeline			

**C. Mid-North (Hedingham & Maplestead)**

Current PAN: 75  
 Current Capacity: 530

## Reception Place Forecast

Year	25/26	26/27	27/28	28/29	29/30	30/31	31/32	32/33	33/34	34/35
+/-	0	18	22	12	12	12	12	12	12	12
de Vere Primary, St Giles' CE Primary Gt Maplestead, St Peter's CE Primary Sible Hedingham										

## Number on Roll (NOR)

Year	NOR
25/26	503
26/27	492
27/28	476
28/29	461
29/30	454

## Project Pipeline

School	Year	Description	Places
No expansion projects currently in pipeline			

**D. East (Halstead)**

Current PAN: 227  
 Current Capacity: 1,604

## Reception Place Forecast

Year	25/26	26/27	27/28	28/29	29/30	30/31	31/32	32/33	33/34	34/35
+/-	25	45	45	29	26	24	24	24	24	24
Colne Engaine CE Primary, Earls Colne Primary, Gosfield Primary, Holy Trinity CE Primary Halstead, Richard de Clare Academy, St Andrew's CE Primary Halstead, St John the Baptist CE (V/A) Primary Pebmarsh										

## Number on Roll (NOR)

Year	NOR
25/26	1,487
26/27	1,511
27/28	1,502
28/29	1,505
29/30	1,479

## Project Pipeline

School	Year	Description	Places
No expansion projects currently in pipeline			

**E. Southwest (Braintree)**

Current PAN: 705  
Current Capacity: 5,450

Reception Place Forecast

Year	25/26	26/27	27/28	28/29	29/30	30/31	31/32	32/33	33/34	34/35
+/-	108	24	102	45	25	8	-8	-23	-38	-52
Beckers Green Primary, Bocking Primary, Gt Bradfords Infant, Gt Bradfords Junior, John Bunyan Primary, John Ray Infant, John Ray Junior, Lyons Hall Primary*, Notley Green Primary, Rayne Primary, St Francis Catholic Primary, St Michael's CE Primary, Stisted CE Primary, White Court Primary, White Notley CE Primary										

Number on Roll (NOR)

Year	NOR
25/26	4,823
26/27	4,859
27/28	4,800
28/29	4,849
29/30	4,886

Project Pipeline

School	Year	Description	Places
New Primary School	30/31	2 form entry new primary school (will open with PAN of 30)	30/420
Increase of PAN at new school	32/33	Increase of PAN by 1 form of entry	30/0

Education sites to accommodate new primary schools have been secured on the Panfield Lane development and on land at Straits Mill through a S106 agreements.

**F. Southeast (Feering)**

Current PAN: 130  
Current Capacity: 895

Reception Place Forecast

Year	25/26	26/27	27/28	28/29	29/30	30/31	31/32	32/33	33/34	34/35
+/-	30	14	19	13	9	3	-2	-8	-12	-16
Feering CE Primary, Kelvedon St Mary's CE Primary, St Peter's CE Primary Coggeshall										

Number on Roll (NOR)

Year	NOR
25/26	829
26/27	843
27/28	865
28/29	859
29/30	859

Project Pipeline

School	Year	Description	Places
St Peter's CE Primary	26/27	½ form entry expansion	15/105
Feering CE Primary	31/32	Small expansion	5/35

**G. Mid-southeast (Cressing & Silver End)**

Current PAN: 90  
 Current Capacity: 630

## Reception Place Forecast

Year	25/26	26/27	27/28	28/29	29/30	30/31	31/32	32/33	33/34	34/35
+/-	16	2	-7	-2	-2	-2	-2	-2	-4	-5
Cressing Primary, Silver End Academy										

## Number on Roll (NOR)

Year	NOR
25/26	560
26/27	604
27/28	636
28/29	651
29/30	654

## Project Pipeline

School	Year	Description	Places
Cressing Primary	26/27	½ form entry expansion	15/105

**H. South (Witham)**

Current PAN: 455  
 Current Capacity: 3,138

## Reception Place Forecast

Year	25/26	26/27	27/28	28/29	29/30	30/31	31/32	32/33	33/34	34/35
+/-	28	9	9	-1	-8	-12	-14	-15	-15	-16
Acorn Academy, Chipping Hill Primary, Elm Hall Primary, Hatfield Peverel Infant, Hatfield Peverel St Andrew's Junior, Holy Family Catholic Primary, Howbridge CE Junior, Howbridge Infant, Powers Hall Academy, Rivenhall CE Primary, Templars Academy, Terling CE Primary										

## Number on Roll (NOR)

Year	NOR
25/26	3,005
26/27	3,060
27/28	3,122
28/29	3,177
29/30	3,208

## Project Pipeline

School	Year	Description	Places
New Primary School at Lodge Farm	27/28	2 form entry new primary school (will open with PAN of 30)	30/420

An education site to accommodate a new primary school has been secured on the Lodge Farm development through a S106 agreement. The DfE have approved a Free School to open in September 2027.



## Secondary School Planning Groups

### A. Northeast (Halstead)

Current PAN: 506  
Current Capacity: 2,968

#### Year 7 Place Forecast

Year	25/26	26/27	27/28	28/29	29/30	30/31	31/32	32/33	33/34	34/35
+/-	66	61	-11	9	26	6	40	55	57	118
Hedingham School, Honeywood, Ramsey										

#### Number on Roll (NOR)

Year	NOR
25/26	2,703
26/27	2,664
27/28	2,679
28/29	2,671
29/30	2,603

#### Project Pipeline

School	Year	Description	Places
No expansion projects currently in pipeline			

### B. West (Braintree)

Current PAN: 670  
Current Capacity: 3,692

#### Year 7 Place Forecast

Year	25/26	26/27	27/28	28/29	29/30	30/31	31/32	32/33	33/34	34/35
+/-	56	44	19	20	-7	21	23	39	-28	27
Alec Hunter, Notley High School, Tabor										

#### Number on Roll (NOR)

Year	NOR
25/26	3,414
26/27	3,419
27/28	3,520
28/29	3,606
29/30	3,697

#### Project Pipeline

School	Year	Description	Places
No expansion projects currently in pipeline			

**C. South (Witham)**

Current PAN: 420

Current Capacity: 2,330

## Year 7 Place Forecast

Year	25/26	26/27	27/28	28/29	29/30	30/31	31/32	32/33	33/34	34/35
+/-	20	1	-7	-26	-32	-29	-6	-24	-30	-49
Maltings Academy, New Rickstones Academy										

## Number on Roll (NOR)

Year	NOR
25/26	2,176
26/27	2,252
27/28	2,299
28/29	2,330
29/30	2,372

## Project Pipeline

School	Year	Description	Places
Maltings Academy	27/28	2 form entry expansion	60/300

## 3.1.2 Chelmsford

### Primary School Planning Groups

#### A. North (Walthams)

Current PAN: 153

Current Capacity: 1,115

##### Reception Place Forecast

Year	25/26	26/27	27/28	28/29	29/30	30/31	31/32	32/33	33/34	34/35
+/-	29	27	29	8	-20	-46	-72	-98	-123	-146
Broomfield Primary, Ford End CE Primary, Gt Leighs Primary, Gt Waltham CE Primary, Little Waltham CE Primary										

##### Number on Roll (NOR)

Year	NOR
25/26	1,015
26/27	989
27/28	1,008
28/29	1,078
29/30	1,252

##### Project Pipeline

School	Year	Description	Places
New Primary School	28/29	2 form entry new primary school	60/420

An education site to accommodate a new primary school is included in Chelmsford's Local Plan as part of a housing allocation in the Great Leighs area. This forecast also includes housing from the initial phase of the Northeast Chelmsford Garden Community, which will provide new schools to meet forecast demand.

#### B. City northwest (Melbourne)

Current PAN: 240

Current Capacity: 1,710

##### Reception Place Forecast

Year	25/26	26/27	27/28	28/29	29/30	30/31	31/32	32/33	33/34	34/35
+/-	45	75	49	49	42	34	29	24	19	15
Kings Road Primary, Lawford Mead Primary, Newlands Spring Primary, Parkwood Academy, St Pius X Primary										

##### Number on Roll (NOR)

Year	NOR
25/26	1,589
26/27	1,485
27/28	1,445
28/29	1,429
29/30	1,425

##### Project Pipeline

School	Year	Description	Places
No expansion projects currently in pipeline			

Chelmsford's Local Plan allocates land for education use as part of the 'West of Chelmsford' housing development. A new school is dependent on the rate of delivery of new housing and forecasts will be monitored closely.

**C. City northeast (Springfield)**

Current PAN: 480

Current Capacity: 3,310

## Reception Place Forecast

Year	25/26	26/27	27/28	28/29	29/30	30/31	31/32	32/33	33/34	34/35
+/-	49	63	71	49	41	34	28	22	18	15
Barnes Farm Infant, Barnes Farm Junior, Beaulieu Park School, The Bishops CE & Catholic Primary, Boreham Primary, Chancellor Park Primary, Perryfields Infant, Perryfields Junior, Springfield Primary, Tyrrells Primary										

## Number on Roll (NOR)

Year	NOR
25/26	3,231
26/27	3,201
27/28	3,177
28/29	3,150
29/30	3,130

## Project Pipeline

School	Year	Description	Places
No expansion projects currently in pipeline			

**D. West (Writtle)**

Current PAN: 85

Current Capacity: 595

## Reception Place Forecast

Year	25/26	26/27	27/28	28/29	29/30	30/31	31/32	32/33	33/34	34/35
+/-	5	22	23	16	16	16	15	15	15	15
Highwood Primary, Roxwell CE Primary, Writtle Infant, Writtle Junior										

## Number on Roll (NOR)

Year	NOR
25/26	537
26/27	529
27/28	511
28/29	500
29/30	494

## Project Pipeline

School	Year	Description	Places
No expansion projects currently in pipeline			

**E. City Centre**

Current PAN: 435

Current Capacity: 3,268

## Reception Place Forecast

Year	25/26	26/27	27/28	28/29	29/30	30/31	31/32	32/33	33/34	34/35
+/-	6	1	-7	-10	-15	-18	-21	-22	-24	-26

Cathedral CE Primary, Maltese Road Primary, Meadgate Primary, Moulsham Infant, Moulsham Junior, Oaklands Infant, Our Lady Immaculate Catholic Primary, Trinity Road Primary, Westlands Primary

## Number on Roll (NOR)

Year	NOR
25/26	3,038
26/27	3,039
27/28	3,051
28/29	3,086
29/30	3,067

## Project Pipeline

School	Year	Description	Places
No expansion projects currently in pipeline			

There is additional capacity of 30 places per year within existing accommodation of the schools in this group to mitigate the forecast demand for places.

**F. East (Danbury)**

Current PAN: 104

Current Capacity: 818

## Reception Place Forecast

Year	25/26	26/27	27/28	28/29	29/30	30/31	31/32	32/33	33/34	34/35
+/-	4	30	28	21	20	19	18	18	17	16

Danbury Park Primary, East Hanningfield CE Primary, Priory Primary, St John's CE Primary

## Number on Roll (NOR)

Year	NOR
25/26	709
26/27	677
27/28	636
28/29	611
29/30	594

## Project Pipeline

School	Year	Description	Places
No expansion projects currently in pipeline			

**G. City South (Baddow)**

Current PAN: 282

Current Capacity: 1,986

## Reception Place Forecast

Year	25/26	26/27	27/28	28/29	29/30	30/31	31/32	32/33	33/34	34/35
+/-	50	55	72	52	46	43	40	38	37	37

Baddow Hall Infant, Baddow Hall Junior, Beehive Lane Primary, Galleywood Infant, Larkrise Primary, Margaretting CE Primary, Mildmay Primary, St Michael's CE Junior

## Number on Roll (NOR)

Year	NOR
25/26	1,802
26/27	1,765
27/28	1,716
28/29	1,693
29/30	1,658

## Project Pipeline

School	Year	Description	Places
No expansion projects currently in pipeline			

**H. South (Rettendon)**

Current PAN: 65

Current Capacity: 454

## Reception Place Forecast

Year	25/26	26/27	27/28	28/29	29/30	30/31	31/32	32/33	33/34	34/35
+/-	20	24	24	22	22	22	22	22	22	21

Rettendon Primary, St Luke's Park Primary, St Peter's CE Primary West Hanningfield

## Number on Roll (NOR)

Year	NOR
25/26	387
26/27	387
27/28	381
28/29	367
29/30	348

## Project Pipeline

School	Year	Description	Places
No expansion projects currently in pipeline			

**I. Southeast (Woodham Ferrers)**

Current PAN: 239  
 Current Capacity: 1,667

Reception Place Forecast

Year	25/26	26/27	27/28	28/29	29/30	30/31	31/32	32/33	33/34	34/35
+/-	64	80	81	68	58	50	43	36	31	28
Collingwood Primary, Elmwood Primary, St Joseph's Cath Primary, St Mary's CE Primary, Trinity St Mary's CE Primary, Woodville Primary										

Number on Roll (NOR)

Year	NOR
25/26	1,385
26/27	1,319
27/28	1,298
28/29	1,290
29/30	1,308

Project Pipeline

School	Year	Description	Places
No expansion projects currently in pipeline			

Chelmsford's Local Plan allocates land for education use north-west of Hamberts Farm, which could facilitate a new primary school if required.

## Secondary School Planning Groups

### A. Mid (Chelmsford)

Current PAN: 2,060

Current Capacity: 13,112

#### Year 7 Place Forecast

Year	25/26	26/27	27/28	28/29	29/30	30/31	31/32	32/33	33/34	34/35
+/-	43	25	20	76	76	183	307	178	229	256

Beaulieu Park School, The Boswells School, Chelmer Valley High School, Chelmsford County High, Great Baddow High School, Hylands School, King Edward VI, Moulsham High School, The Sandon School, St John Payne Catholic School

#### Number on Roll (NOR)

Year	NOR
25/26	12,596
26/27	12,697
27/28	12,768
28/29	12,788
29/30	12,740

#### Project Pipeline

School	Year	Description	Places
No expansion projects currently in pipeline			

Beaulieu Park School was built with additional capacity to enable it to increase their PAN by 60 places per year (to 240 places) when required, as the Beaulieu housing development grows and local demand increases.

Land for education use is allocated in Chelmsford's Local Plan which could accommodate a new school on the Northeast Chelmsford Garden Community.

### B. Woodham & Burnham

Current PAN: 435

Current Capacity: 2,775

#### Year 7 Place Forecast

Year	25/26	26/27	27/28	28/29	29/30	30/31	31/32	32/33	33/34	34/35
+/-	-10	8	13	2	-20	23	47	6	35	54

Ormiston Rivers Academy, William De Ferrers School

#### Number on Roll (NOR)

Year	NOR
25/26	2,507
26/27	2,506
27/28	2,531
28/29	2,518
29/30	2,562

#### Project Pipeline

School	Year	Description	Places
No expansion projects currently in pipeline.			

There is existing capacity within the schools to accommodate small peaks in demand, without the need for an expansion project.



### 3.1.3 Maldon

#### Primary School Planning Groups

##### A. Northwest (Maldon)

Current PAN: 332

Current Capacity: 2,339

##### Reception Place Forecast

Year	25/26	26/27	27/28	28/29	29/30	30/31	31/32	32/33	33/34	34/35
+/-	41	36	27	14	3	-4	-9	-14	-18	-21

All Saints' CE Primary, Gt Totham Primary, Heybridge Primary, Maldon Primary, St Francis Catholic Primary, Wentworth Primary, Woodham Walter CE Primary

##### Number on Roll (NOR)

Year	NOR
25/26	2,103
26/27	2,185
27/28	2,234
28/29	2,272
29/30	2,311

##### Project Pipeline

School	Year	Description	Places
Limebrook Way Primary	28/29	The new school will increase PAN from 30 to 60 to fully utilise the available accommodation.	30/0

Land for education use is allocated in Maldon's Local Plan which could accommodate a new school on the Heybridge Garden Suburb.

##### B. Northeast (Tollesbury & Tolleshunt)

Current PAN: 45

Current Capacity: 449

##### Reception Place Forecast

Year	25/26	26/27	27/28	28/29	29/30	30/31	31/32	32/33	33/34	34/35
+/-	10	10	13	11	11	10	10	10	10	10

Tollesbury School, Tolleshunt D'Arcy St Nicholas Primary

##### Number on Roll (NOR)

Year	NOR
25/26	284
26/27	280
27/28	274
28/29	271
29/30	250

##### Project Pipeline

School	Year	Description	Places
No expansion projects currently in pipeline			

**C. Southwest (Norton)**

Current PAN: 106

Current Capacity: 842

## Reception Place Forecast

Year	25/26	26/27	27/28	28/29	29/30	30/31	31/32	32/33	33/34	34/35
+/-	12	1	29	13	13	12	12	12	12	11
Cold Norton Primary, Latchingdon CE Primary, Maylandsea Primary, Purleigh Primary										

## Number on Roll (NOR)

Year	NOR
25/26	718
26/27	721
27/28	698
28/29	687
29/30	680

## Project Pipeline

School	Year	Description	Places
No expansion projects currently in pipeline			

**D. East (Bradwell & Tillingham)**

Current PAN: 46

Current Capacity: 336

## Reception Place Forecast

Year	25/26	26/27	27/28	28/29	29/30	30/31	31/32	32/33	33/34	34/35
+/-	20	24	24	22	22	22	22	22	22	22
St Cedd's CE Primary, St Nicholas Primary										

## Number on Roll (NOR)

Year	NOR
25/26	207
26/27	200
27/28	190
28/29	181
29/30	173

## Project Pipeline

School	Year	Description	Places
No expansion projects currently in pipeline			

**E. Southeast (Burnham & Southminster)**

Current PAN: 135

Current Capacity: 975

## Reception Place Forecast

Year	25/26	26/27	27/28	28/29	29/30	30/31	31/32	32/33	33/34	34/35
+/-	-2	-3	5	-1	-2	-2	-3	-3	-3	-4
Burnham-on-Crouch Primary, St Leonard's CE Primary, St Mary's CE Primary										

## Number on Roll (NOR)

Year	NOR
25/26	927
26/27	946
27/28	942
28/29	947
29/30	925

## Project Pipeline

School	Year	Description	Places
Expansion project to be confirmed			

Proposals consulted on in 2024 to expand primary provision are being reassessed due to lower than anticipated demand for school places.

## Secondary School Planning Groups

### A. West (Plume)

Current PAN: 295

Current Capacity: 1,841

#### Year 7 Place Forecast

Year	25/26	26/27	27/28	28/29	29/30	30/31	31/32	32/33	33/34	34/35
+/-	-15	4	-28	-18	-31	-26	-25	-14	-20	-13
The Plume School										

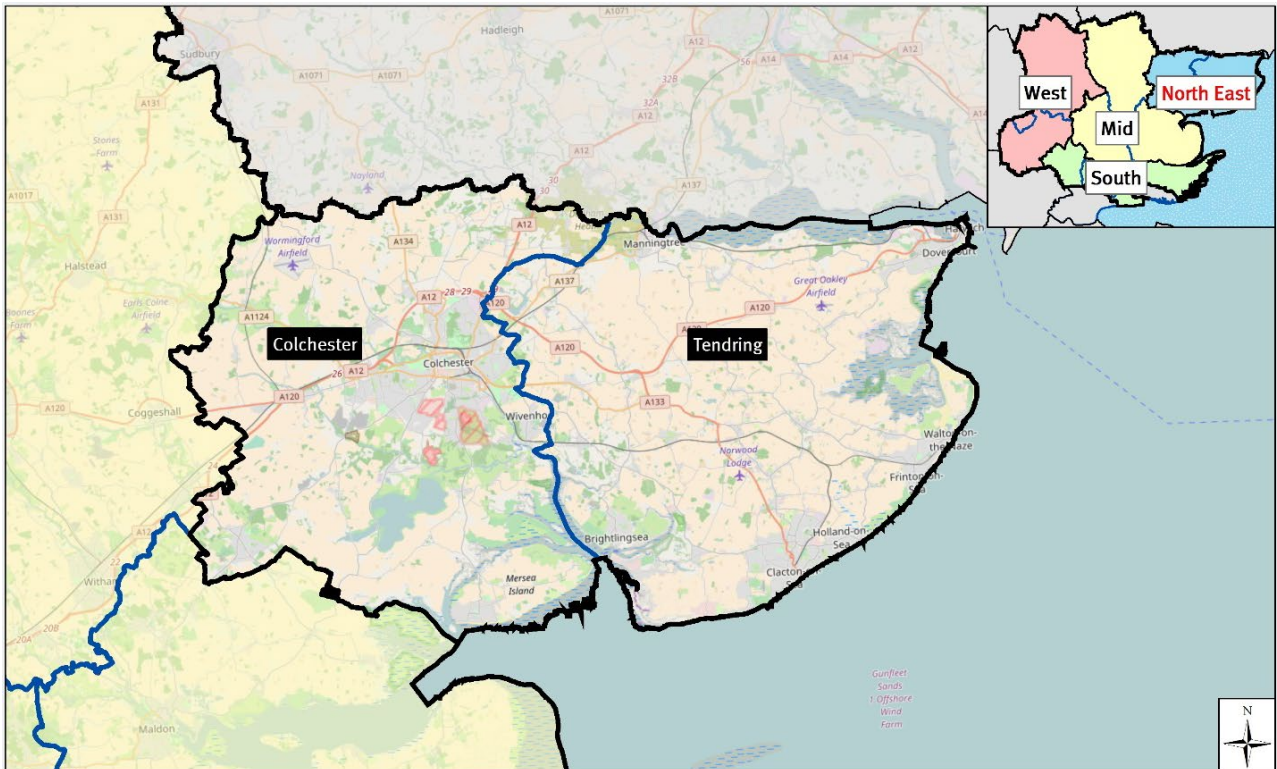
#### Number on Roll (NOR)

Year	NOR
25/26	1,789
26/27	1,809
27/28	1,852
28/29	1,864
29/30	1,887

#### Project Pipeline

School	Year	Description	Places
The Plume School	25/26	2 form entry expansion	60/300

## 3.2 North East Essex



For the purposes of school organisation and place planning North East Essex is Colchester City and Tendring District. Both authorities have adopted Local Development Plans which include a large new Garden Community on the Colchester / Tendring border. Both have commenced work on their next Plan.

## 3.2.1 Colchester

### Primary School Planning Groups

#### A. North (Langham)

Current PAN: 76

Current Capacity: 531

##### Reception Place Forecast

Year	25/26	26/27	27/28	28/29	29/30	30/31	31/32	32/33	33/34	34/35
+/-	11	23	20	17	16	16	15	15	15	15
Boxted St Peter's CE Primary, Dedham CE Primary, Langham Primary										

##### Number on Roll (NOR)

Year	NOR
25/26	501
26/27	480
27/28	471
28/29	452
29/30	441

##### Project Pipeline

School	Year	Description	Places
No expansion projects currently in pipeline			

#### B. Northwest (Tey)

Current PAN: 94

Current Capacity: 654

##### Reception Place Forecast

Year	25/26	26/27	27/28	28/29	29/30	30/31	31/32	32/33	33/34	34/35
+/-	33	26	39	31	31	30	29	29	28	28
Chappel CE Primary, Fordham All Saints CE Primary, Great Tey CE Primary, Holy Trinity CE Primary, St Andrew's CE Primary (Marks Tey)										

##### Number on Roll (NOR)

Year	NOR
25/26	495
26/27	495
27/28	493
28/29	487
29/30	477

##### Project Pipeline

School	Year	Description	Places
No expansion projects currently in pipeline			

**C. City north (Highwoods)**

Current PAN: 585

Current Capacity: 4,111

## Reception Place Forecast

Year	25/26	26/27	27/28	28/29	29/30	30/31	31/32	32/33	33/34	34/35
+/-	84	56	60	57	46	33	23	13	6	3
Bishop William Ward CE Primary, Braiswick Primary, Brinkley Grove Primary, Camulos Academy, Friars Grove Primary, Heathlands CE Primary, Highwoods Community Primary, Myland Community Primary, North Primary and Nursery, Queen Boudica Primary, St John's CE Primary										

## Number on Roll (NOR)

Year	NOR
25/26	3,961
26/27	3,942
27/28	3,886
28/29	3,844
29/30	3,849

## Project Pipeline

School	Year	Description	Places
Trinity School	27/28	2 form entry primary provision	60/420

Trinity is an all-through free school which opened to admit Year 7 students in 2021. It will admit primary age children into Reception in line with local demand, presently anticipated to be in 2027/28. This project is delivered by the DfE and subject to their approvals.

**D. City east (Greenstead)**

Current PAN: 210

Current Capacity: 1,470

## Reception Place Forecast

Year	25/26	26/27	27/28	28/29	29/30	30/31	31/32	32/33	33/34	34/35
+/-	40	26	13	25	20	15	11	6	1	-3
Hazelmere Infant and Nursery, Hazelmere Junior, Parsons Heath CE Primary, Roach Vale Primary, Unity Primary Academy, Willow Brook Primary and Nursery										

## Number on Roll (NOR)

Year	NOR
25/26	1,368
26/27	1,357
27/28	1,348
28/29	1,326
29/30	1,330

## Project Pipeline

School	Year	Description	Places
No expansion projects currently in pipeline			

Demand in this group is forecast to grow due to the impact of the Tendring Colchester Border Garden Community. New schools will be secured as part of the garden community to ensure sufficient local school places.

**E. City southwest (Stanway)**

Current PAN: 500

Current Capacity: 3,740

## Reception Place Forecast

Year	25/26	26/27	27/28	28/29	29/30	30/31	31/32	32/33	33/34	34/35
+/-	100	97	154	109	102	94	84	75	67	64
Birch CE Primary, Copford CE Primary, Gosbecks Primary, Hamilton Primary, Home Farm Primary, Lakelands Primary, Lexden Primary, Prettygate Infant, Prettygate Junior, St Teresa's Catholic Primary, Stanway Fiveways Primary, Stanway Primary										

## Number on Roll (NOR)

Year	NOR
25/26	3,316
26/27	3,250
27/28	3,114
28/29	3,040
29/30	2,987

## Project Pipeline

School	Year	Description	Places
No expansion projects currently in pipeline			

Although forecasts indicate there will be a significant surplus of places in the Reception cohort for the next three years we expect these cohorts to increase in size as they move through primary school, due to additional housing being built in the area.

**F. City southeast (Berechurch)**

Current PAN: 630

Current Capacity: 4,760

## Reception Place Forecast

Year	25/26	26/27	27/28	28/29	29/30	30/31	31/32	32/33	33/34	34/35
+/-	127	116	123	110	102	93	83	75	69	63
Cherry Tree Academy, , Kendall CE Primary, King's Ford Infant and Nursery, King's Ford Junior, Layer-De-La-Haye CE Primary, Monkwick Infant and Nursery, Monkwick Junior, Montgomery Infant and Nursery, Montgomery Junior, Old Heath Primary, St George's School, St James' CE Primary, St John's Green Primary, St Michael's Primary and Nursery, St Thomas More's Catholic Primary										

## Number on Roll (NOR)

Year	NOR
25/26	4,010
26/27	3,927
27/28	3,870
28/29	3,831
29/30	3,771

## Project Pipeline

School	Year	Description	Places
No expansion projects currently in pipeline			



**G. East (Wivenhoe)**

Current PAN: 90  
 Current Capacity: 653

## Reception Place Forecast

Year	25/26	26/27	27/28	28/29	29/30	30/31	31/32	32/33	33/34	34/35
+/-	17	29	29	23	20	17	17	16	16	16
Broomgrove Infant, Broomgrove Junior, Millfields Primary										

## Number on Roll (NOR)

Year	NOR
25/26	593
26/27	566
27/28	551
28/29	527
29/30	522

## Project Pipeline

School	Year	Description	Places
No expansion projects currently in pipeline			

**H. Southwest (Messing & Tiptree)**

Current PAN: 117  
 Current Capacity: 939

## Reception Place Forecast

Year	25/26	26/27	27/28	28/29	29/30	30/31	31/32	32/33	33/34	34/35
+/-	20	-6	0	-1	-2	-2	-3	-3	-4	-4
Baynards Primary, Messing Primary, Milldene Primary, St Luke's CE Primary, Tiptree Heath Primary										

## Number on Roll (NOR)

Year	NOR
25/26	853
26/27	877
27/28	879
28/29	883
29/30	858

## Project Pipeline

School	Year	Description	Places
No expansion projects currently in pipeline			

It may be necessary to admit a bulge class at one of the schools in the group in 2026/27. There is additional capacity of 15 places per year within existing accommodation of the schools in this group to mitigate potential demand for additional places.

**I. Southeast (Fingringhoe)**

Current PAN: 67  
 Current Capacity: 481

## Reception Place Forecast

Year	25/26	26/27	27/28	28/29	29/30	30/31	31/32	32/33	33/34	34/35
+/-	10	-1	7	3	3	2	1	1	0	0
Fingringhoe CE Primary, Langenhoe Community Primary, St Lawrence CE Primary										

## Number on Roll (NOR)

Year	NOR
25/26	415
26/27	418
27/28	427
28/29	430
29/30	441

## Project Pipeline

School	Year	Description	Places
No expansion projects currently in pipeline			

**J. Mersea**

Current PAN: 60  
 Current Capacity: 420

## Reception Place Forecast

Year	25/26	26/27	27/28	28/29	29/30	30/31	31/32	32/33	33/34	34/35
+/-	23	24	18	18	17	17	17	16	16	16
Mersea Island Primary										

## Number on Roll (NOR)

Year	NOR
25/26	345
26/27	325
27/28	338
28/29	335
29/30	319

## Project Pipeline

School	Year	Description	Places
No expansion projects currently in pipeline			

## Secondary School Planning Groups

### A. Mid (Colchester)

Current PAN: 2,318

Current Capacity: 12,769

#### Year 7 Place Forecast

Year	25/26	26/27	27/28	28/29	29/30	30/31	31/32	32/33	33/34	34/35
+/-	39	96	120	149	172	251	300	392	326	397

Colchester Academy, Colchester County High School for Girls, Colchester Royal Grammar School, Paxman Academy, The Gilbert School, Philip Morant School and College, St Benedict's Catholic College, St Helena School, The Stanway School, Thomas Lord Audley School, The Trinity School

#### Number on Roll (NOR)

Year	NOR
25/26	12,424
26/27	12,484
27/28	12,476
28/29	12,352
29/30	12,220

#### Project Pipeline

School	Year	Description	Places
No expansion projects currently in pipeline			

### B. South (Thurstable)

Current PAN: 210

Current Capacity: 1,275

#### Year 7 Place Forecast

Year	25/26	26/27	27/28	28/29	29/30	30/31	31/32	32/33	33/34	34/35
+/-	23	2	10	9	-11	10	24	34	10	9

Thurstable School

#### Number on Roll (NOR)

Year	NOR
25/26	1,121
26/27	1,131
27/28	1,125
28/29	1,136
29/30	1,159

#### Project Pipeline

School	Year	Description	Places
No expansion projects currently in pipeline			

Forecast deficit in 2029/30 is expected to be managed within the school's existing accommodation.

## 3.2.2 Tending

### Primary School Planning Groups

#### A. Northwest (Manningtree)

Current PAN: 135

Current Capacity: 946

##### Reception Place Forecast

Year	25/26	26/27	27/28	28/29	29/30	30/31	31/32	32/33	33/34	34/35
+/-	8	30	20	11	8	7	5	3	1	-2
Ardleigh St Mary's CE Primary, Highfields Primary, Lawford CE Primary, Stourview CofE Primary Academy (formerly known as Mistley Norman CE Primary)										

##### Number on Roll (NOR)

Year	NOR
25/26	772
26/27	806
27/28	847
28/29	858
29/30	878

##### Project Pipeline

School	Year	Description	Places
No expansion projects currently in pipeline			

#### B. North (Oakley)

Current PAN: 54

Current Capacity: 341

##### Reception Place Forecast

Year	25/26	26/27	27/28	28/29	29/30	30/31	31/32	32/33	33/34	34/35
+/-	12	10	10	11	11	11	10	10	10	10
All Saints CE Primary, Bradfield Primary, Wix & Wrabness Primary										

##### Number on Roll (NOR)

Year	NOR
25/26	341
26/27	332
27/28	326
28/29	316
29/30	311

##### Project Pipeline

School	Year	Description	Places
No expansion projects currently in pipeline			

**C. Northeast (Dovercourt & Harwich)**

Current PAN: 277

Current Capacity: 1,951

## Reception Place Forecast

Year	25/26	26/27	27/28	28/29	29/30	30/31	31/32	32/33	33/34	34/35
+/-	64	63	60	55	51	47	44	43	42	41

All Saints' CE Primary Dovercourt, Chase Lane Primary and Nursery, Harwich Primary and Nursery, Mayflower Primary, Spring Meadow Primary, St Joseph's Cath Primary Harwich, Two Village CE Primary (now known as St Michael's CE Primary Academy)

## Number on Roll (NOR)

Year	NOR
25/26	1,690
26/27	1,666
27/28	1,632
28/29	1,620
29/30	1,637

## Project Pipeline

School	Year	Description	Places
No expansion projects currently in pipeline			

**D. West (Frating)**

Current PAN: 227

Current Capacity: 1,437

## Reception Place Forecast

Year	25/26	26/27	27/28	28/29	29/30	30/31	31/32	32/33	33/34	34/35
+/-	48	50	23	35	30	26	19	14	9	3

Alresford Primary, Brightlingsea Primary and Nursery, Elmstead Primary, Gt Bentley Primary, St George's CE Primary

## Number on Roll (NOR)

Year	NOR
25/26	1,348
26/27	1,361
27/28	1,393
28/29	1,368
29/30	1,387

## Project Pipeline

School	Year	Description	Places
No expansion projects currently in pipeline			

**E. Mid (Thorpe)**

Current PAN: 90

Current Capacity: 626

## Reception Place Forecast

Year	25/26	26/27	27/28	28/29	29/30	30/31	31/32	32/33	33/34	34/35
+/-	15	20	16	13	11	9	6	6	6	5
Rolph CE Primary, St Andrew's CE Primary, Tendring Primary										

## Number on Roll (NOR)

Year	NOR
25/26	594
26/27	588
27/28	583
28/29	574
29/30	571

## Project Pipeline

School	Year	Description	Places
No expansion projects currently in pipeline			

**F. East (Frinton & Walton)**

Current PAN: 150

Current Capacity: 1,096

## Reception Place Forecast

Year	25/26	26/27	27/28	28/29	29/30	30/31	31/32	32/33	33/34	34/35
+/-	12	35	19	17	15	14	13	13	13	12
Frinton-On-Sea Primary, Hamford Primary Academy, Kirby Primary Academy, Walton-on-the-Naze Primary										

## Number on Roll (NOR)

Year	NOR
25/26	991
26/27	979
27/28	979
28/29	968
29/30	960

## Project Pipeline

School	Year	Description	Places
No expansion projects currently in pipeline			

**G. South (Clacton)**

Current PAN: 638

Current Capacity: 4,731

## Reception Place Forecast

Year	25/26	26/27	27/28	28/29	29/30	30/31	31/32	32/33	33/34	34/35
+/-	99	64	98	75	66	55	45	36	27	16

Alton Park Junior, Burrsville Infant Academy, Cann Hall Primary, Engaines Primary and Nursery, Gt Clacton CE Junior, Holland Haven Primary, Holland Park Primary, Oakwood Infant and Nursery, Ravens Academy, Sir Martin Frobisher Academy, St Clare's Catholic Primary, St Osyth CE Primary, White Hall Academy

## Number on Roll (NOR)

Year	NOR
25/26	4,261
26/27	4,241
27/28	4,195
28/29	4,159
29/30	4,113

## Project Pipeline

School	Year	Description	Places
No expansion projects currently in pipeline			

There is a significant amount of new housing planned for Clacton. Sites for education use are allocated in Tendering's Local Plan.

## Secondary School Planning Groups

### A. Northwest (Manningtree)

Current PAN: 190

Current Capacity: 1,020

#### Year 7 Place Forecast

Year	25/26	26/27	27/28	28/29	29/30	30/31	31/32	32/33	33/34	34/35
+/-	4	5	20	4	7	21	9	-1	22	10
Manningtree High School										

#### Number on Roll (NOR)

Year	NOR
25/26	932
26/27	958
27/28	944
28/29	943
29/30	932

#### Project Pipeline

School	Year	Description	Places
No expansion projects currently in pipeline			

There is additional capacity of 14 places per year within existing accommodation at the school, which would enable it to manage small spikes in local demand.

### B. Northeast (Harwich)

Current PAN: 224

Current Capacity: 1,433

#### Year 7 Place Forecast

Year	25/26	26/27	27/28	28/29	29/30	30/31	31/32	32/33	33/34	34/35
+/-	-17	-16	-21	-8	13	9	-7	25	23	29
Harwich and Dovercourt High School										

#### Number on Roll (NOR)

Year	NOR
25/26	1,208
26/27	1,253
27/28	1,283
28/29	1,297
29/30	1,261

#### Project Pipeline

School	Year	Description	Places
No expansion projects currently in pipeline			

The school reduced its PAN by 36 to match previously lower local demand for places. Should there be a need to admit additional local children the school would be able to do so within its existing accommodation.



**C. Southwest (Colne)**

Current PAN: 280  
 Current Capacity: 1,540

Year 7 Place Forecast

Year	25/26	26/27	27/28	28/29	29/30	30/31	31/32	32/33	33/34	34/35
+/-	27	46	71	32	61	76	53	73	86	74
The Colne Community School and College										

Number on Roll (NOR)

Year	NOR
25/26	1,308
26/27	1,316
27/28	1,273
28/29	1,242
29/30	1,179

Project Pipeline

School	Year	Description	Places
No expansion projects currently in pipeline			

**D. Southeast (Clacton)**

Current PAN: 936  
 Current Capacity: 5,710

Year 7 Place Forecast

Year	25/26	26/27	27/28	28/29	29/30	30/31	31/32	32/33	33/34	34/35
+/-	37	109	105	110	96	153	176	175	179	189
Clacton County High, Clacton Coastal Academy, Tendring Technology College										

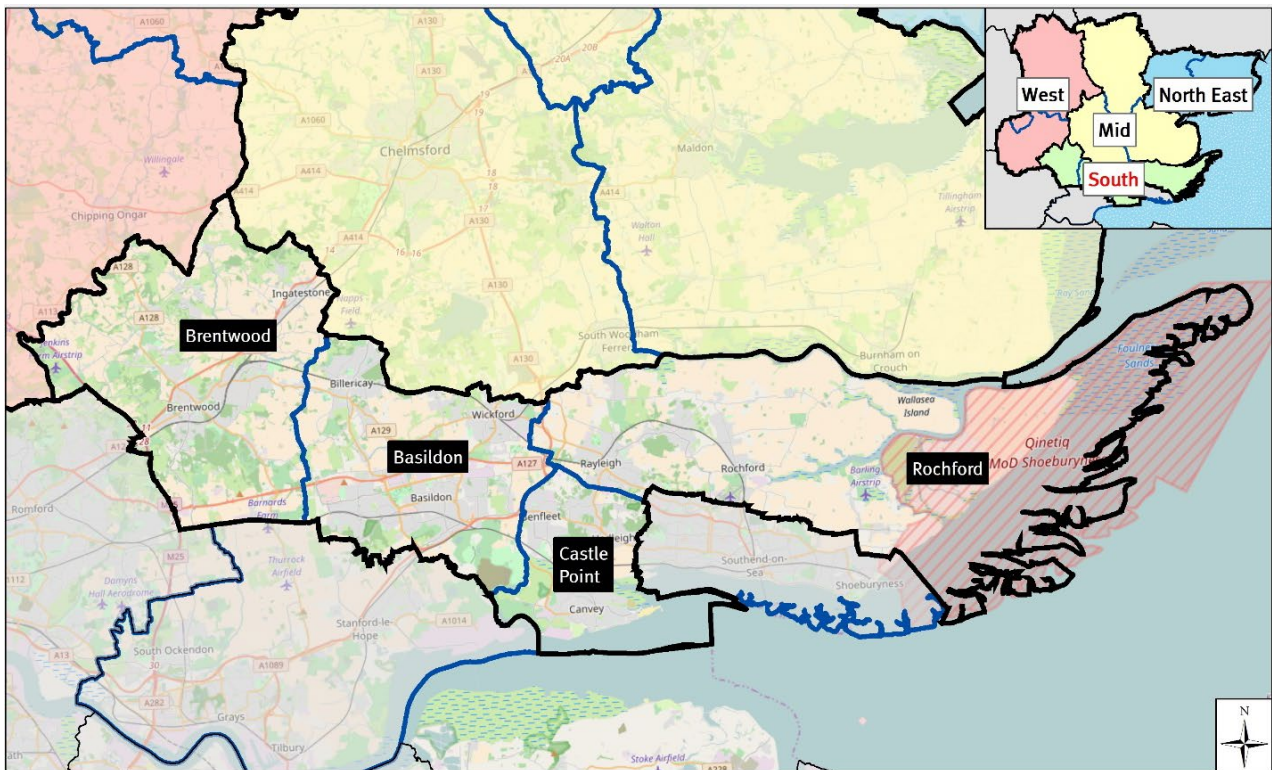
Number on Roll (NOR)

Year	NOR
25/26	5,075
26/27	5,060
27/28	5,028
28/29	4,946
29/30	4,936

Project Pipeline

School	Year	Description	Places
No expansion projects currently in pipeline			

### 3.3 South Essex



For the purposes of school organisation and place planning South Essex is Basildon, Brentwood, Castle Point and Rochford districts and boroughs. Only Brentwood has an adopted Local Development Plan, and it has started a review.

The demand for school places in this quadrant is influenced by cross-border pupil movement as it borders Greater London, Southend-on-Sea, and Thurrock authorities.

### 3.3.1 Basildon

#### Primary School Planning Groups

##### A. Northwest (Billericay)

Current PAN: 510  
Current Capacity: 3,620

##### Reception Place Forecast

Year	25/26	26/27	27/28	28/29	29/30	30/31	31/32	32/33	33/34	34/35
+/-	59	100	68	71	69	67	66	65	63	61

Brightside Primary, Buttsbury Primary, Downham CE Primary, Quilters Infant, Quilters Junior, South Green Infant, South Green Junior, St Peter's Cath Primary, Stock CE Primary, Sunnymede Primary

##### Number on Roll (NOR)

Year	NOR
25/26	3,476
26/27	3,401
27/28	3,316
28/29	3,240
29/30	3,202

##### Project Pipeline

School	Year	Description	Places
No expansion projects currently in pipeline			

##### B. Northeast (Wickford)

Current PAN: 435  
Current Capacity: 3,124

##### Reception Place Forecast

Year	25/26	26/27	27/28	28/29	29/30	30/31	31/32	32/33	33/34	34/35
+/-	60	40	55	50	46	43	40	35	33	31

Abacus Primary, Grange Primary, Hilltop Infant, Hilltop Junior, North Crescent Primary, Oakfield Primary, Runwell Primary, The Wickford CE School, Wickford Primary

##### Number on Roll (NOR)

Year	NOR
25/26	2,791
26/27	2,772
27/28	2,730
28/29	2,706
29/30	2,725

##### Project Pipeline

School	Year	Description	Places
No expansion projects currently in pipeline			

**C. Town west (Laindon)**

Current PAN: 750  
 Current Capacity: 5,076

## Reception Place Forecast

Year	25/26	26/27	27/28	28/29	29/30	30/31	31/32	32/33	33/34	34/35
+/-	44	75	105	62	56	52	49	48	46	42
Chapel Hill Primary, Gt Berry Primary, Janet Duke Primary, Laindon Park Primary, Lee Chapel Primary, Lincewood Primary, Merrylands Primary, Millhouse Primary, Noak Bridge Primary, Phoenix Primary, St Anne Line Catholic Infant, St Anne Line Catholic Junior										

## Number on Roll (NOR)

Year	NOR
25/26	5,029
26/27	5,033
27/28	4,968
28/29	4,945
29/30	4,918

## Project Pipeline

School	Year	Description	Places
Chapel Hill Primary	As required	1 form entry expansion utilising the full extent of accommodation	30/0

**D. Town Centre**

Current PAN: 740  
 Current Capacity: 5,135

## Reception Place Forecast

Year	25/26	26/27	27/28	28/29	29/30	30/31	31/32	32/33	33/34	34/35
+/-	112	123	130	107	98	94	91	88	84	79
Bardfield Academy, Cherry Tree Primary, Crays Hill Primary, Fairhouse Primary, Ghyllgrove Primary, Greensted Primary, Kingswood Primary, Maple Grove Primary, Ryedene Primary, St Teresa's Catholic Primary, Vange Primary, Whitmore Primary, Willows Primary										

## Number on Roll (NOR)

Year	NOR
25/26	4,960
26/27	4,871
27/28	4,795
28/29	4,750
29/30	4,691

## Project Pipeline

School	Year	Description	Places
No expansion projects currently in pipeline			

A s106 agreement providing land for education use at Gardiners Lane has been signed and could be used for a primary school if required to meet long term demand.

**E. Town east (Bowers Gifford)**

Current PAN: 285

Current Capacity: 1,995

## Reception Place Forecast

Year	25/26	26/27	27/28	28/29	29/30	30/31	31/32	32/33	33/34	34/35
+/-	41	55	58	50	50	49	49	49	48	48
Briscoe Primary, Eversley Primary, Felmore Primary, Northlands Primary, St Margaret's CE										

## Number on Roll (NOR)

Year	NOR
25/26	1,923
26/27	1,868
27/28	1,816
28/29	1,762
29/30	1,731

## Project Pipeline

School	Year	Description	Places
No expansion projects currently in pipeline			

## Secondary School Planning Groups

### A. Northwest (Billericay)

Current PAN: 550  
Current Capacity: 3,293

#### Year 7 Place Forecast

Year	25/26	26/27	27/28	28/29	29/30	30/31	31/32	32/33	33/34	34/35
+/-	37	2	-10	-11	37	19	58	56	104	68
The Billericay, Mayflower High										

#### Number on Roll (NOR)

Year	NOR
25/26	3,329
26/27	3,354
27/28	3,373
28/29	3,391
29/30	3,362

#### Project Pipeline

School	Year	Description	Places
No expansion projects currently in pipeline			

Many Basildon pupils attend secondary school in Billericay. As the area fills due to local growth over time, it is expected that pupils living in Basildon will attend their local schools.

### B. Northeast (Wickford)

Current PAN: 464  
Current Capacity: 2,716

#### Year 7 Place Forecast

Year	25/26	26/27	27/28	28/29	29/30	30/31	31/32	32/33	33/34	34/35
+/-	-28	-24	-24	-14	-8	-7	8	10	2	18
Beauchamps High, The Bromfords School										

#### Number on Roll (NOR)

Year	NOR
25/26	2,669
26/27	2,713
27/28	2,736
28/29	2,746
29/30	2,750

#### Project Pipeline

School	Year	Description	Places
No expansion projects currently in pipeline			

Beauchamps High expanded permanently in September 2024 by 1 form of entry to address the above forecast deficit.

Currently many Basildon pupils attend secondary school in Wickford. As the area fills due to local growth over time, it is expected that pupils living in Basildon will attend their local schools.

**C. South (Basildon)**

Current PAN: 1,110

Current Capacity: 6,050

## Year 7 Place Forecast

Year	25/26	26/27	27/28	28/29	29/30	30/31	31/32	32/33	33/34	34/35
+/-	42	6	-24	9	5	-23	49	85	96	150
Basildon Lower Academy, Basildon Upper Academy, De La Salle, James Hornsby, Woodlands										

## Number on Roll (NOR)

Year	NOR
25/26	5,335
26/27	5,455
27/28	5,659
28/29	5,776
29/30	5,899

## Project Pipeline

School	Year	Description	Places
tbc	27/28	1 form entry expansion	30/150

Many Basildon pupils attend secondary school in Billericay and Wickford. If those areas fill due to their own local growth over time, there is expected to be an increased need for school places to accommodate pupils living in Basildon.

### 3.3.2 Brentwood

#### Primary School Planning Groups

##### A. Northwest (Doddinghurst)

Current PAN: 115

Current Capacity: 813

##### Reception Place Forecast

Year	25/26	26/27	27/28	28/29	29/30	30/31	31/32	32/33	33/34	34/35
+/-	31	14	22	20	20	20	20	20	21	21
Blackmore Primary, Doddinghurst Infant, Doddinghurst CE Junior, Kelvedon Hatch Primary										

##### Number on Roll (NOR)

Year	NOR
25/26	709
26/27	716
27/28	712
28/29	696
29/30	693

##### Project Pipeline

School	Year	Description	Places
No expansion projects currently in pipeline			

##### B. Northeast (Ingatstone & Mountnessing)

Current PAN: 75

Current Capacity: 525

##### Reception Place Forecast

Year	25/26	26/27	27/28	28/29	29/30	30/31	31/32	32/33	33/34	34/35
+/-	1	2	11	3	3	4	4	4	4	4
Ingatstone CE Infant, Ingatstone Junior, Mountnessing CE Primary										

##### Number on Roll (NOR)

Year	NOR
25/26	511
26/27	541
27/28	528
28/29	519
29/30	511

##### Project Pipeline

School	Year	Description	Places
No expansion projects currently in pipeline			



### C. South (Brentwood)

Current PAN: 708  
Current Capacity: 5,170

#### Reception Place Forecast

Year	25/26	26/27	27/28	28/29	29/30	30/31	31/32	32/33	33/34	34/35
+/-	56	11	87	31	22	17	10	7	6	4

Bentley St Paul's CE Primary, Hogarth Primary, Holly Trees Primary, Hutton All Saints' CE Primary, Ingrave Johnstone CE Primary, Larchwood Primary, Long Ridings Primary, Shenfield St Mary's CE Primary, St Helen's Catholic Infant, St Helen's Cath Junior, St Joseph the Worker Catholic Primary, St Peter's CE Primary, St Thomas of Canterbury CE Primary, Warley Primary, Willowbrook Primary

#### Number on Roll (NOR)

Year	NOR
25/26	4,831
26/27	4,858
27/28	4,793
28/29	4,838
29/30	4,882

#### Project Pipeline

School	Year	Description	Places
No expansion projects currently in pipeline			

Additional primary capacity is expected to be required in Shenfield when new housing build rates increase in that area. A potential new school site is included in Brentwood's Local Plan.

### D. West Horndon

Current PAN: 30  
Current Capacity: 210

#### Reception Place Forecast

Year	25/26	26/27	27/28	28/29	29/30	30/31	31/32	32/33	33/34	34/35
+/-	6	0	8	-2	-10	-19	-27	-36	-44	-51

West Horndon Primary

#### Number on Roll (NOR)

Year	NOR
25/26	178
26/27	189
27/28	185
28/29	227
29/30	279

#### Project Pipeline

School	Year	Description	Places
New Primary School	28/29	2 form entry new primary school	60/420

The medium to long term forecast increase in demand for primary school places is due to a planned new Garden Community (Dunton Village), for which new schools will be provided.

## Secondary School Planning Groups

### A. Mid (Brentwood)

Current PAN: 1,299

Current Capacity: 8,259

#### Year 7 Place Forecast

Year	25/26	26/27	27/28	28/29	29/30	30/31	31/32	32/33	33/34	34/35
+/-	-8	-12	-26	26	58	86	36	88	59	147

Anglo European School, Becket Keys CE School, Brentwood County High School, Brentwood Ursuline Convent High School, Shenfield High School, St Martin's School

#### Number on Roll (NOR)

Year	NOR
25/26	8,329
26/27	8,415
27/28	8,511
28/29	8,541
29/30	8,467

#### Project Pipeline

School	Year	Description	Places
No expansion projects currently in pipeline			

A large number of pupils who access Brentwood schools come from out of county. Local demand will be assessed each year to determine whether additional spaces are required, or whether we would anticipate some pupils being “pushed back” to their local schools.

### 3.3.3 Castle Point

#### Primary School Planning Groups

##### A. North (Thundersley)

Current PAN: 540

Current Capacity: 3,813

##### Reception Place Forecast

Year	25/26	26/27	27/28	28/29	29/30	30/31	31/32	32/33	33/34	34/35
+/-	77	66	76	72	72	72	73	74	74	73

Hadleigh Infant, Hadleigh Junior, Holy Family Catholic Primary, Jotmans Hall Primary, Kents Hill Infant, Kents Hill Junior, Kingston Primary, Montgomerie Primary, Robert Drake Primary, South Benfleet Primary, Thundersley Primary, Westwood Academy, Woodham Ley Primary

##### Number on Roll (NOR)

Year	NOR
25/26	3,623
26/27	3,573
27/28	3,492
28/29	3,437
29/30	3,364

##### Project Pipeline

School	Year	Description	Places
No expansion projects currently in pipeline			

##### B. South (Canvey)

Current PAN: 420

Current Capacity: 3,167

##### Reception Place Forecast

Year	25/26	26/27	27/28	28/29	29/30	30/31	31/32	32/33	33/34	34/35
+/-	84	61	119	88	88	88	89	89	89	89

Canvey Island Infant, Canvey Junior, Leigh Beck Infant, Leigh Beck Junior, Lubbins Park Primary, Northwick Park Primary, St Joseph's Catholic Primary, St Katherine's CE Primary, William Read Primary, Winter Gardens Academy

##### Number on Roll (NOR)

Year	NOR
25/26	2,626
26/27	2,581
27/28	2,487
28/29	2,411
29/30	2,397

##### Project Pipeline

School	Year	Description	Places
No expansion projects currently in pipeline			

## Secondary School Planning Groups

### A. North (Benfleet)

Current PAN: 740

Current Capacity: 4,819

#### Year 7 Place Forecast

Year	25/26	26/27	27/28	28/29	29/30	30/31	31/32	32/33	33/34	34/35
+/-	43	54	42	77	62	108	111	174	156	169
The Appleton School, The Deanes, The King John School										

#### Number on Roll (NOR)

Year	NOR
25/26	4,239
26/27	4,235
27/28	4,195
28/29	4,138
29/30	4,063

#### Project Pipeline

School	Year	Description	Places
No expansion projects currently in pipeline			

### B. South (Canvey)

Current PAN: 420

Current Capacity: 2,100

#### Year 7 Place Forecast

Year	25/26	26/27	27/28	28/29	29/30	30/31	31/32	32/33	33/34	34/35
+/-	64	76	73	63	124	92	137	127	106	156
Castle View School, Cornelius Vermuyden										

#### Number on Roll (NOR)

Year	NOR
25/26	1,857
26/27	1,833
27/28	1,807
28/29	1,784
29/30	1,701

#### Project Pipeline

School	Year	Description	Places
No expansion projects currently in pipeline			

### 3.3.4 Rochford

#### Primary School Planning Groups

##### A. West (Hullbridge & Rayleigh)

Current PAN: 485

Current Capacity: 3,461

##### Reception Place Forecast

Year	25/26	26/27	27/28	28/29	29/30	30/31	31/32	32/33	33/34	34/35
+/-	65	80	58	60	57	52	48	43	41	40
Down Hall Primary, Edward Francis Primary, Glebe Primary, Grove Wood Primary, Our Lady of Ransom Catholic Primary, Rayleigh Primary, Riverside Primary, St Nicholas CE Primary, Wyburns Primary										

##### Number on Roll (NOR)

Year	NOR
25/26	3,167
26/27	3,159
27/28	3,144
28/29	3,126
29/30	3,056

##### Project Pipeline

School	Year	Description	Places
St Nicholas CE Primary	27/28	Small expansion up to 1 form of entry	10/70

There is growth in the northwest of the planning group, related to housing development, and the above expansion will be required to mitigate local demand.

##### B. Mid (Ashingdon & Hockley)

Current PAN: 225

Current Capacity: 1,600

##### Reception Place Forecast

Year	25/26	26/27	27/28	28/29	29/30	30/31	31/32	32/33	33/34	34/35
+/-	39	32	31	34	32	31	29	28	27	27
Ashingdon Primary, Hockley Primary, Plumberow Primary, Westerings Primary										

##### Number on Roll (NOR)

Year	NOR
25/26	1,523
26/27	1,492
27/28	1,462
28/29	1,425
29/30	1,400

##### Project Pipeline

School	Year	Description	Places
No expansion projects currently in pipeline			

**C. East (Rochford)**

Current PAN: 202

Current Capacity: 1,416

## Reception Place Forecast

Year	25/26	26/27	27/28	28/29	29/30	30/31	31/32	32/33	33/34	34/35
+/-	8	32	11	9	4	-2	-7	-7	-8	-8

Canewdon Endowed CE Primary, Holt Farm Infant, Holt Farm Junior, Rochford Primary, St Teresa's Catholic Primary, Stambridge Primary, Waterman Primary

## Number on Roll (NOR)

Year	NOR
25/26	1,190
26/27	1,223
27/28	1,284
28/29	1,307
29/30	1,356

## Project Pipeline

School	Year	Description	Places
tbc	28/29	½ form entry expansion	15/105

**D. Southeast (Barling & Wakering)**

Current PAN: 90

Current Capacity: 630

## Reception Place Forecast

Year	25/26	26/27	27/28	28/29	29/30	30/31	31/32	32/33	33/34	34/35
+/-	12	4	18	11	11	10	10	10	10	10

Barling Magna Primary, Great Wakering Primary

## Number on Roll (NOR)

Year	NOR
25/26	592
26/27	588
27/28	570
28/29	555
29/30	548

## Project Pipeline

School	Year	Description	Places
No expansion projects currently in pipeline			

## Secondary School Planning Groups

### A. West (Rayleigh)

Current PAN: 570  
Current Capacity: 3,450

#### Year 7 Place Forecast

Year	25/26	26/27	27/28	28/29	29/30	30/31	31/32	32/33	33/34	34/35
+/-	13	66	65	69	41	77	76	106	123	112
The Fitzwimarc School, The Sweyne Park School										

#### Number on Roll (NOR)

Year	NOR
25/26	3,274
26/27	3,227
27/28	3,178
28/29	3,115
29/30	3,096

#### Project Pipeline

School	Year	Description	Places
No expansion projects currently in pipeline			

### B. East (Rochford & Hockley)

Current PAN: 540  
Current Capacity: 3,280

#### Year 7 Place Forecast

Year	25/26	26/27	27/28	28/29	29/30	30/31	31/32	32/33	33/34	34/35
+/-	37	48	54	10	63	81	54	55	89	77
Greensward Academy, The King Edmund School										

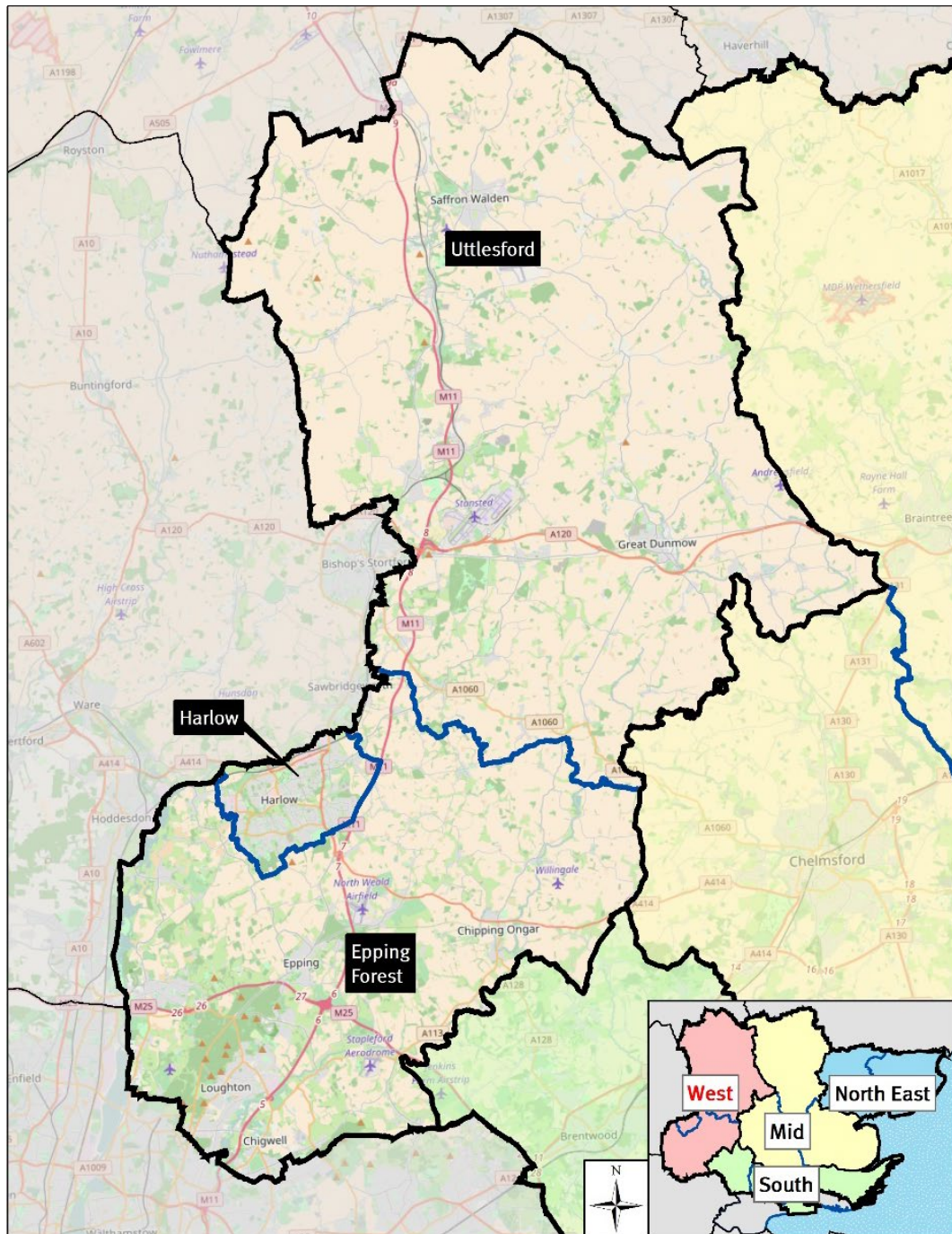
#### Number on Roll (NOR)

Year	NOR
25/26	3,019
26/27	3,012
27/28	2,985
28/29	3,019
29/30	2,992

#### Project Pipeline

School	Year	Description	Places
No expansion projects currently in pipeline			

## 3.4 West Essex



For the purposes of school organisation and place planning West Essex is Uttlesford, Epping Forest and Harlow districts. Demand for school places in this quadrant is influenced by cross-border pupil movement as it borders Greater London, Cambridgeshire, and Hertfordshire authorities.

Harlow and Epping Forest have an adopted Local Development Plan. Uttlesford have submitted a draft Plan for Examination.



### 3.4.1 Epping Forest

#### Primary School Planning Groups

##### A. Nazeing

Current PAN: 45  
Current Capacity: 300

##### Reception Place Forecast

Year	25/26	26/27	27/28	28/29	29/30	30/31	31/32	32/33	33/34	34/35
+/-	3	0	1	-3	-3	-3	-3	-3	-2	-2
Nazeing Primary										

##### Number on Roll (NOR)

Year	NOR
25/26	290
26/27	300
27/28	323
28/29	333
29/30	339

##### Project Pipeline

School	Year	Description	Places
No expansion projects currently in pipeline			

##### B. North (Epping)

Current PAN: 225  
Current Capacity: 1,575

##### Reception Place Forecast

Year	25/26	26/27	27/28	28/29	29/30	30/31	31/32	32/33	33/34	34/35
+/-	25	13	21	9	1	-7	-13	-20	-26	-29
Coopersale and Theydon Garnon CE Primary, Epping Primary, Epping Upland CE Primary, Ivy Chimneys Primary, St Andrew's CE Primary										

##### Number on Roll (NOR)

Year	NOR
25/26	1,535
26/27	1,539
27/28	1,547
28/29	1,573
29/30	1,636

##### Project Pipeline

School	Year	Description	Places
New Primary School	29/30	2 form entry new primary school (may temporarily operate with a lower PAN to match local need)	60/420

Planned new housing in this area is generating the forecast deficit of school places, and two potential sites for a new primary school are included in Epping Forest's Local Plan.

**C. Northeast (Ongar)**

Current PAN: 134

Current Capacity: 986

## Reception Place Forecast

Year	25/26	26/27	27/28	28/29	29/30	30/31	31/32	32/33	33/34	34/35
+/-	29	20	25	18	13	10	8	8	8	9

Chipping Ongar Primary, Dr Walker's CE Primary, High Ongar Primary, Matching Green CE Primary, Moreton CE Primary, Ongar Primary

## Number on Roll (NOR)

Year	NOR
25/26	836
26/27	843
27/28	838
28/29	851
29/30	868

## Project Pipeline

School	Year	Description	Places
No expansion projects currently in pipeline			

**D. West (Waltham Abbey)**

Current PAN: 255

Current Capacity: 1,839

## Reception Place Forecast

Year	25/26	26/27	27/28	28/29	29/30	30/31	31/32	32/33	33/34	34/35
+/-	23	34	37	26	22	18	16	13	11	10

High Beech CE Primary, Hillhouse CE Primary, Leverton Primary, Upshire Primary, Waltham Holy Cross Primary

## Number on Roll (NOR)

Year	NOR
25/26	1,633
26/27	1,623
27/28	1,631
28/29	1,646
29/30	1,669

## Project Pipeline

School	Year	Description	Places
No expansion projects currently in pipeline			

**E. Southwest (Buckhurst Hill & Loughton)**

Current PAN: 525

Current Capacity: 4,303

## Reception Place Forecast

Year	25/26	26/27	27/28	28/29	29/30	30/31	31/32	32/33	33/34	34/35
+/-	22	34	29	22	20	20	21	23	24	24
Alderton Infant, Alderton Junior, Buckhurst Hill Primary, Hereward Primary, St John Fisher Catholic Primary, St John's CE Primary, Staples Road Primary, Theydon Bois Primary, Thomas Willingale School, White Bridge Primary										

## Number on Roll (NOR)

Year	NOR
25/26	3,649
26/27	3,621
27/28	3,641
28/29	3,615
29/30	3,589

## Project Pipeline

School	Year	Description	Places
No expansion projects currently in pipeline			

**F. Southeast (Chigwell)**

Current PAN: 165

Current Capacity: 1,129

## Reception Place Forecast

Year	25/26	26/27	27/28	28/29	29/30	30/31	31/32	32/33	33/34	34/35
+/-	16	27	21	18	19	19	19	20	20	20
Chigwell Primary, Chigwell Row Infant, Lambourne Primary, Limes Farm Infant, Limes Farm Junior, Stapleford Abbots Primary										

## Number on Roll (NOR)

Year	NOR
25/26	968
26/27	1,002
27/28	1,018
28/29	1,016
29/30	1,017

## Project Pipeline

School	Year	Description	Places
No expansion projects currently in pipeline			

## Secondary School Planning Groups

### A. West (Loughton)

Current PAN: 1,037

Current Capacity: 6,283

#### Year 7 Place Forecast

Year	25/26	26/27	27/28	28/29	29/30	30/31	31/32	32/33	33/34	34/35
+/-	65	-10	39	-48	15	-58	-9	-9	30	49
Davenant, Debden Park High School, King Harold Business & Enterprise, Roding Valley High School, West Hatch High School										

#### Number on Roll (NOR)

Year	NOR
25/26	6,164
26/27	6,238
27/28	6,250
28/29	6,328
29/30	6,324

#### Project Pipeline

School	Year	Description	Places
No expansion projects currently in pipeline due to the cross-border movement within this group.			

A school in the group has reduced their PAN and could increase again in the future to accommodate local demand for places.

### B. East (Epping & Ongar)

Current PAN: 300

Current Capacity: 1,620

#### Year 7 Place Forecast

Year	25/26	26/27	27/28	28/29	29/30	30/31	31/32	32/33	33/34	34/35
+/-	42	19	-13	-14	2	0	-8	18	6	5
Epping St John's CE, Ongar Academy										

#### Number on Roll (NOR)

Year	NOR
25/26	1,614
26/27	1,623
27/28	1,666
28/29	1,713
29/30	1,743

#### Project Pipeline

School	Year	Description	Places
No expansion projects currently in pipeline			

The Harlow Gilston Garden Community includes housing on Epping Forest District Council's border with Harlow. The Local Plans for these districts allocate two potential sites for secondary school provision.

## 3.4.2 Harlow

### Primary School Planning Groups

#### A. Northwest (Town Centre)

Current PAN: 420  
Current Capacity: 2,984

##### Reception Place Forecast

Year	25/26	26/27	27/28	28/29	29/30	30/31	31/32	32/33	33/34	34/35
+/-	65	32	47	42	42	37	33	25	16	14

Cooks Spinney Primary Academy and Nursery, Downs Primary and Nursery, Freshwaters Primary Academy, Hare Street Primary and Nursery, Little Parndon Primary, Pemberley Academy, St Alban's Catholic Academy, Tany's Dell Primary and Nursery

##### Number on Roll (NOR)

Year	NOR
25/26	2,784
26/27	2,783
27/28	2,787
28/29	2,761
29/30	2,725

##### Project Pipeline

School	Year	Description	Places
No expansion projects currently in pipeline			

#### B. East (Church Langley)

Current PAN: 330  
Current Capacity: 2,370

##### Reception Place Forecast

Year	25/26	26/27	27/28	28/29	29/30	30/31	31/32	32/33	33/34	34/35
+/-	26	-7	12	2	-6	-17	-28	-38	-49	-60

Church Langley Community Primary, Churchgate CE Primary, Fawbert & Barnard's Primary, Harlowbury Primary, Henry Moore Primary, Newhall Primary Academy, Potter Street Academy

##### Number on Roll (NOR)

Year	NOR
25/26	2,221
26/27	2,249
27/28	2,257
28/29	2,270
29/30	2,342

##### Project Pipeline

School	Year	Description	Places
Harlowbury Primary	26/27	1 form entry expansion	30/210
Newhall Primary	28/29	1 form entry expansion	30/210

These figures represent Henry Moore at their higher number (some years operating with a PAN of 60). Demand is driven by new housing in the area. Education land is also allocated in Harlow's Local Plan on the proposed 'Garden Community' development to the east and will enable new primary schools to be built to accommodate long term demand for places.

**C. Southwest (Tye Green)**

Current PAN: 645

Current Capacity: 4,629

Reception Place Forecast

Year	25/26	26/27	27/28	28/29	29/30	30/31	31/32	32/33	33/34	34/35
+/-	101	103	92	88	79	65	54	43	30	17

Abbotsweld Primary, Holy Cross Catholic Academy, Jerounds Primary Academy, Katherines Primary Academy, Kingsmoor Academy, Latton Green Primary, Longwood Primary Academy, Milwards Primary and Nursery, Pear Tree Mead Academy, Purford Green Primary, Roydon Primary, St James' CE Primary, St Luke's Catholic Academy, Water Lane Primary Academy, William Martin CE Infant and Nursery, William Martin CE Junior

Number on Roll (NOR)

Year	NOR
25/26	4,156
26/27	4,099
27/28	4,044
28/29	4,011
29/30	4,034

Project Pipeline

School	Year	Description	Places
No expansion projects currently in pipeline			

Land for education use, to meet potential long-term demand that may be generated by 'Garden Community' proposals on Harlow's southern border, is included in Epping Forest District Council's Local Plan.

## Secondary School Planning Groups

### A. Mid (Harlow)

Current PAN: 1,260

Current Capacity: 7,590

#### Year 7 Place Forecast

Year	25/26	26/27	27/28	28/29	29/30	30/31	31/32	32/33	33/34	34/35
+/-	42	66	46	46	68	47	99	86	3	25
BMAT STEM Academy, Burnt Mill Academy, Mark Hall Academy, Passmores Academy, Sir Frederick Gibberd College, St Mark's West Essex Catholic School, Stewards Academy										

#### Number on Roll (NOR)

Year	NOR
25/26	6,322
26/27	6,370
27/28	6,440
28/29	6,516
29/30	6,500

#### Project Pipeline

School	Year	Description	Places
No expansion projects currently in pipeline			

The Harlow Gilston Garden Community includes housing on Harlow District Council's border with Epping Forest. The Local Plans for these districts allocate two potential sites for secondary school provision.

PANs at Sir Frederick Gibberd College (SFGC) and Mark Hall Academy have been adjusted in response to building issues at SFGC. It is anticipated these will return to normal in the future, adding an additional form of entry capacity.

### 3.4.3 Uttlesford

#### Primary School Planning Groups

##### A. Chrishall

Current PAN: 15  
Current Capacity: 105

##### Reception Place Forecast

Year	25/26	26/27	27/28	28/29	29/30	30/31	31/32	32/33	33/34	34/35
+/-	11	4	7	7	7	7	7	7	7	7
Chrishall Holy Trinity & St Nicholas CE Primary										

##### Number on Roll (NOR)

Year	NOR
25/26	117
26/27	116
27/28	100
28/29	88
29/30	76

##### Project Pipeline

School	Year	Description	Places
No expansion projects currently in pipeline			

##### B. North (Saffron Walden)

Current PAN: 255  
Current Capacity: 1,815

##### Reception Place Forecast

Year	25/26	26/27	27/28	28/29	29/30	30/31	31/32	32/33	33/34	34/35
+/-	43	56	49	40	32	27	23	20	20	19
Ashdon Primary, Gt Chesterford CE Primary, Katherine Semar Infant, Katherine Semar Junior, R A Butler Infant, R A Butler Junior, St Mary's CE Primary, St Thomas More Catholic Primary										

##### Number on Roll (NOR)

Year	NOR
25/26	1,727
26/27	1,699
27/28	1,664
28/29	1,651
29/30	1,648

##### Project Pipeline

School	Year	Description	Places
No expansion projects currently in pipeline			

Land options have been secure via s106 agreements for a new primary school, should this be required.



**C. Northeast (Thaxted)**

Current PAN: 106

Current Capacity: 782

## Reception Place Forecast

Year	25/26	26/27	27/28	28/29	29/30	30/31	31/32	32/33	33/34	34/35
+/-	24	35	12	23	22	21	20	20	20	20
Debden CE Primary, Gt Sampford Primary, Radwinter CE Primary, Thaxted Primary, Wimbish Primary										

## Number on Roll (NOR)

Year	NOR
25/26	635
26/27	627
27/28	620
28/29	625
29/30	607

## Project Pipeline

School	Year	Description	Places
No expansion projects currently in pipeline			

**D. Mid-west (Newport)**

Current PAN: 75

Current Capacity: 513

## Reception Place Forecast

Year	25/26	26/27	27/28	28/29	29/30	30/31	31/32	32/33	33/34	34/35
+/-	18	10	22	14	14	14	13	13	13	13
Clavering Primary, Newport Primary, Rickling CE Primary										

## Number on Roll (NOR)

Year	NOR
25/26	451
26/27	463
27/28	442
28/29	443
29/30	444

## Project Pipeline

School	Year	Description	Places
No expansion projects currently in pipeline			

**E. West (Stansted)**

Current PAN: 235

Current Capacity: 1,619

## Reception Place Forecast

Year	25/26	26/27	27/28	28/29	29/30	30/31	31/32	32/33	33/34	34/35
+/-	63	61	43	43	35	29	24	21	19	19
Bentfield Primary, Birchanger CE Primary, Elsenham CE Primary, Farnham CE Primary, Henham and Ugley Primary, Magna Carta Primary, Manuden Primary, St Mary's CE Primary										

## Number on Roll (NOR)

Year	NOR
25/26	1,428
26/27	1,430
27/28	1,434
28/29	1,446
29/30	1,435

## Project Pipeline

School	Year	Description	Places
No expansion projects currently in pipeline			

**F. Mid (Takeley)**

Current PAN: 90

Current Capacity: 690

## Reception Place Forecast

Year	25/26	26/27	27/28	28/29	29/30	30/31	31/32	32/33	33/34	34/35
+/-	28	34	23	26	23	20	18	17	17	17
Roseacres Primary, Takeley Primary										

## Number on Roll (NOR)

Year	NOR
25/26	527
26/27	521
27/28	519
28/29	501
29/30	504

## Project Pipeline

School	Year	Description	Places
No expansion projects currently in pipeline			

**G. Mid-east (Dunmow & Gt Easton)**

Current PAN: 170

Current Capacity: 1,160

## Reception Place Forecast

Year	25/26	26/27	27/28	28/29	29/30	30/31	31/32	32/33	33/34	34/35
+/-	17	10	-5	-25	-38	-50	-62	-72	-80	-89
Dunmow St Mary's Primary, Gt Dunmow Primary, Gt Easton CE Primary, Helena Romanes										

**Number on Roll (NOR)**

Year	NOR
25/26	1,159
26/27	1,207
27/28	1,282
28/29	1,399
29/30	1,477

**Project Pipeline**

School	Year	Description	Places
Helena Romanes School	26/27	1 form entry expansion	30/300
New Primary School	29/30	2 form entry new primary school	60/420

Options on sites for new primary schools, secured through S106 agreements will provide the ability to deliver new primary facilities to meet the increasing local need for school places.

**H. East (Felsted)**

Current PAN: 105

Current Capacity: 768

## Reception Place Forecast

Year	25/26	26/27	27/28	28/29	29/30	30/31	31/32	32/33	33/34	34/35
+/-	34	40	19	28	25	23	20	20	20	20
Felsted Primary, Fritch Green Academy, Stebbing Primary										

**Number on Roll (NOR)**

Year	NOR
25/26	656
26/27	640
27/28	638
28/29	615
29/30	599

**Project Pipeline**

School	Year	Description	Places
No expansion projects currently in pipeline			

**I. South (Hatfield)**

Current PAN: 81  
 Current Capacity: 567

## Reception Place Forecast

Year	25/26	26/27	27/28	28/29	29/30	30/31	31/32	32/33	33/34	34/35
+/-	20	26	24	21	20	19	18	18	18	18
Hatfield Heath Primary, Little Hallingbury CE Primary, Sheering CE Primary, St Mary's CE Primary										

## Number on Roll (NOR)

Year	NOR
25/26	461
26/27	447
27/28	432
28/29	436
29/30	437

## Project Pipeline

School	Year	Description	Places
No expansion projects currently in pipeline			

**J. Rodings**

Current PAN: 30  
 Current Capacity: 300

## Reception Place Forecast

Year	25/26	26/27	27/28	28/29	29/30	30/31	31/32	32/33	33/34	34/35
+/-	0	2	3	1	1	1	1	1	1	1
Rodings Primary										

## Number on Roll (NOR)

Year	NOR
25/26	276
26/27	265
27/28	236
28/29	230
29/30	207

## Project Pipeline

School	Year	Description	Places
No expansion projects currently in pipeline			

The school has accommodation to admit more than 30 pupils per year if required to meet local demand.

## Secondary School Planning Groups

### A. North (Newport & Saffron Walden)

Current PAN: 480

Current Capacity: 3,250

#### Year 7 Place Forecast

Year	25/26	26/27	27/28	28/29	29/30	30/31	31/32	32/33	33/34	34/35
+/-	28	51	13	65	83	72	82	114	127	117
Joyce Frankland Academy, Saffron Walden County High										

#### Number on Roll (NOR)

Year	NOR
25/26	3,178
26/27	3,153
27/28	3,135
28/29	3,048
29/30	2,956

#### Project Pipeline

School	Year	Description	Places
No expansion projects currently in pipeline			

### B. South (Dunmow & Stansted)

Current PAN: 402

Current Capacity: 2,223

#### Year 7 Place Forecast

Year	25/26	26/27	27/28	28/29	29/30	30/31	31/32	32/33	33/34	34/35
+/-	48	13	-5	26	-35	4	0	3	18	-10
Forest Hall, Helena Romanes										

#### Number on Roll (NOR)

Year	NOR
25/26	1,757
26/27	1,864
27/28	2,013
28/29	2,090
29/30	2,261

#### Project Pipeline

School	Year	Description	Places
No expansion projects currently in pipeline			

Demand for school places at Forest Hall School will be monitored closely due to the cross-border movement with pupils attending a new school in Bishops Stortford.

## 4. Past Expansions and New Schools in Essex

The tables below summarise the permanent expansions and new schools that have been delivered at mainstream schools across Essex over the past 7 years. This list does not include numerous other capital investments in the school estate such as maintenance work, temporary accommodation, or accommodation rebuild.

### Mid Essex

#### Braintree

School	Project Type
New Rickstones Academy	Expansion
Alec Hunter Secondary	Expansion
Chipping Hill Primary	Expansion
Cressing Primary	Expansion
De Vere Primary	Expansion
Earls Colne Primary	Expansion
John Bunyan Primary	Expansion
Silver End Primary	Expansion
St Giles Primary	Expansion

#### Chelmsford

School	Project Type
St Luke's Park Primary	New School
Beaulieu Park School	New School
Beaulieu Park School	Expansion
Boreham Primary	Expansion
Broomfield Primary	Expansion
Little Waltham Primary	Expansion
Maltese Road Primary	New School
Margaretting Primary	Expansion
Moulsham High	Expansion
Moulsham Infant	Expansion
Moulsham Junior	Expansion
Springfield Primary	Expansion

#### Maldon

School	Project Type
Ormiston Rivers Academy	Expansion
Limebrook Way Primary	New School

## North East Essex

### Colchester

School	Project Type
Braiswick Primary	New School
Camulos Academy	New School
Home Farm Primary	Expansion
Lakelands Primary	New School
Monkwick Infant	Expansion
Monkwick Junior	Expansion
Paxman Academy	New School
Philip Morant Secondary	Expansion
St John's Green Primary	Expansion
St Lawrence Primary	Expansion
St Michael's Primary	Expansion
Stanway Fiveways Primary	Expansion
Stanway Primary	Expansion
Stanway Secondary	Expansion
The Gilberd Secondary	Expansion
Trinity School	New School

### Tendring

School	Project Type
Alresford Primary	Expansion
Clacton County High School	Expansion
Colne Secondary	Expansion
Great Bentley Primary	Expansion
Hamford Primary	Expansion
Holland Haven Primary	Expansion
Lawford Primary	Expansion
Manningtree Secondary	Expansion
Mayflower Primary	Expansion
Ravens Academy	Expansion
Tendring Primary School	Expansion

## South Essex

### Basildon

School	Project Type
Abacus Primary	Expansion
Beauchamps High	Expansion
Brightside Primary	Expansion
Chapel Hill Primary	New School
Ghyllgrove Primary	Expansion
Lee Chapel Primary	Expansion
Merrylands Primary	Expansion
Northlands Primary	Expansion
Phoenix Primary	Expansion
Runwell Primary	Expansion
Ryedene Primary	Expansion
Whitmore Primary	Expansion

### Brentwood

School	Project Type
Hogarth Primary	Expansion
Larchwood Primary	Expansion
Mountnessing Primary	Expansion
Warley Primary	Expansion
West Horndon Primary	Expansion

### Castle Point

School	Project Type
Northwick Park Primary	Expansion

### Rochford

School	Project Type
Barling Magna Primary	Expansion
Riverside Primary	Expansion
Fitzwimarc Secondary	Expansion
Sweyne Park School	Expansion
Westerings Primary	Expansion



## West Essex

### Epping Forest

School	Project Type
Coopersale & Theydon Garnon Primary	Expansion
Epping Primary	Expansion
Ivy Chimneys	Expansion
Hillhouse Primary	Expansion
Ongar Academy	New School
Roding Valley Secondary	Expansion
St Andrew's Primary	Expansion
West Hatch Secondary	Expansion
White Bridge Primary	Expansion

### Harlow

School	Project Type
Freshwaters Primary	Expansion
Kingsmoor Primary	Expansion
Longwood Primary	Expansion
Newhall Primary	New School
Pear Tree Mead Primary	Expansion
Sir Frederick Gibberd College	New School
The Downs Primary	Expansion

### Uttlesford

School	Project Type
Clavering Primary	Expansion
Elsenham Primary	Expansion
Flitch Green Primary	Expansion
Forest Hall School	Expansion
Helena Romanes Primary	Expansion
Helena Romanes Secondary	Expansion
Joyce Frankland Secondary	Expansion
Magna Carta Primary	New School
Newport Primary	Expansion
R A Butler Infant	Expansion
R A Butler Junior	Expansion
Radwinter Primary	Expansion
Rodings Primary	Expansion
Roseacres Primary	New School
Stebbing Primary	Expansion
Wimbish Primary	Expansion

This information is issued by:  
Essex County Council

Contact us:  
[school.organisation@essex.gov.uk](mailto:school.organisation@essex.gov.uk)

School Organisation & Place Planning  
Essex County Council  
County Hall, Chelmsford  
Essex, CM1 1QH



**Essex\_CC**



**facebook.com/essexcountycouncil**

The information contained in this document can be translated, and/or made available in alternative formats, on request.

Published 26 February 2025